



South African Pulp and Paper Industry

Statistical Data

January to December 2007

Corner Austin & Morris Sts
Woodmead, SANDTON
P.O. Box 1553
2128 RIVONIA
Johannesburg
South Africa

Tel: +27 (0)11 803 5063
Fax: +27 (0)11 803 6708
e-mail: pamsa@pamsa.co.za

Table of Contents

Table of Contents	2
Notes	4
Industry survey results.....	5
Table 1. Summary of survey data	5
Table 2. Pulp and paper production.....	6
Production trends	8
Table 3. Pulp and paper exports	9
Export trends.....	11
Table 4. Value of production	12
Table 5. Value of exported production	13
Trends in the value of production and exports	14
Table 6. Raw material consumption.....	15
Raw material consumption trends	18
Data extracted from South African Revenue Services Records.....	19
Table 7. Summary of South African trade in wood, pulp, paper and their products by value	19
Table 8. Summary of South African trade in wood, pulp, paper and their products by mass	20
Import and export trends	21
Table 9. Summary of South African trade in wood, pulp, paper and their products – 2000	22
Table 10. Summary of South African trade in wood, pulp, paper and their products – 2001	22
Table 11. Summary of South African trade in wood, pulp, paper and their products – 2002	22
Table 12. Summary of South African trade in wood, pulp, paper and their products – 2003	23
Table 13. Summary of South African trade in wood, pulp, paper and their products – 2004	23
Table 14. Summary of South African trade in wood, pulp, paper and their products – 2005	23
Table 15. Summary of South African trade in wood, pulp, paper and their products – 2006	24
Table 16. Summary of South African trade in wood, pulp, paper and their products – 2007	24
Table 17. Summary of South African trade in wood, pulp, paper and their products – January to March 2007	24
Table 18. Summary of South African trade in wood, pulp, paper and their products – April to June 2007	25
Table 19. Summary of South African trade in wood, pulp, paper and their products – July to September 2007	25
Table 20. Summary of South African trade in wood, pulp, paper and their products – October to December 2007	25
Table 21. Wood and wood products trade – 2001	26

Table 22.	Wood and wood products trade – 2002.....	27
Table 23.	Wood and wood products trade – 2003.....	28
Table 24.	Wood and wood products trade – 2004.....	29
Table 25.	Wood and wood products trade – 2005.....	30
Table 26.	Wood and wood products trade – 2006.....	31
Table 27.	Wood and wood products trade – 2007.....	32
Table 28.	Wood and wood products trade – January to March 2007.....	33
Table 29.	Wood and wood products trade – April to June 2007.....	34
Table 30.	Wood and wood products trade – July to September 2007.....	35
Table 31.	Wood and wood products trade – October to December 2007.....	36
Table 32.	Pulp trade – 2001.....	37
Table 33.	Pulp trade – 2002.....	37
Table 34.	Pulp trade – 2003.....	38
Table 35.	Pulp trade – 2004.....	38
Table 36.	Pulp trade – 2005.....	39
Table 37.	Pulp trade – 2006.....	39
Table 38.	Pulp trade – 2007.....	40
Table 39.	Pulp trade – January to March 2007.....	40
Table 40.	Pulp trade – April to June 2007.....	41
Table 41.	Pulp trade – July to September 2007.....	41
Table 42.	Pulp trade – October to December 2007.....	42
Table 43.	Paper and paper products trade – 2001.....	43
Table 44.	Paper and paper products trade – 2002.....	44
Table 45.	Paper and paper products trade – 2003.....	45
Table 46.	Paper and paper products trade – 2004.....	46
Table 47.	Paper and paper products trade – 2005.....	47
Table 48.	Paper and paper products trade – 2006.....	48
Table 49.	Paper and paper products trade – 2007.....	49
Table 50.	Paper and paper products trade – January to March 2007.....	50
Table 51.	Paper and paper products trade – April to June 2007.....	51
Table 52.	Paper and paper products trade – July to September 2007.....	52
Table 53.	Paper and paper products trade – October to December 2007.....	53

Notes

1. The companies participating in the industry survey are as follows:
 - a. Kimberly-Clark SA
 - b. Mondi Business Papers
 - c. Mondi Packaging South Africa
 - d. Mondi Shanduka Newsprint
 - e. Nampak Tissue
 - f. Nampak Corrugated
 - g. Sappi Kraft
 - h. Sappi Fine Paper
 - i. Sappi Saiccor
2. An estimate of production and capacities has been made for companies not participating in the survey.
3. The quantity of imports or exports reported by the South African Revenue Services is sometimes not reconcilable with known information and should be used with caution.
4. There is a discrepancy between the export quantity and value as reported in the survey and the data reported by SARS.

Industry survey results

Table 1. Summary of survey data

Summary	2001	2002	2003	2004	2005	2006	2007	2001 Q4	2002 Q4	2003 Q4	2004 Q4	2005 Q4	2006 Q4	2007 Q4	Change
Production	(1000 tons)	(1000 tons)	(1000 tons)	(1000 tons)	(1000 tons)	(1000 tons)	(1000 tons)	(1000 tons)	(1000 tons)	(1000 tons)	(1000 tons)	(1000 tons)	(1000 tons)	(1000 tons)	
Printing and writing papers	863	913	920	1019	936	1056	1132	222	239	235	254	216	278	290	4.5%
Packaging papers	1245	1265	1265	1285	1354	1363	1400	304	294	300	316	336	353	361	2.1%
Tissue paper	150	154	152	197	193	191	195	38	41	39	49	49	48	48	-0.7%
Total paper	2258	2332	2337	2502	2483	2610	2727	564	574	573	619	601	679	699	2.9%
Total pulp	2138	2183	2317	2076	2274	2325	2406	489	528	556	578	579	634	618	-2.5%
Exports	(1000 tons)	(1000 tons)	(1000 tons)	(1000 tons)	(1000 tons)	(1000 tons)	(1000 tons)	(1000 tons)	(1000 tons)	(1000 tons)	(1000 tons)	(1000 tons)	(1000 tons)	(1000 tons)	
Paper	639	642	690	740	631	664	704	149	129	162	167	136	156	157	0.4%
Pulp	583	597	744	701	696	647	671	127	138	190	178	178	173	159	-7.7%
Imports[‡]	(1000 tons)	(1000 tons)	(1000 tons)	(1000 tons)	(1000 tons)	(1000 tons)	(1000 tons)	(1000 tons)	(1000 tons)	(1000 tons)	(1000 tons)	(1000 tons)	(1000 tons)	(1000 tons)	
Paper	254	265	371	399	449	588	615	64	74	85	106	121	148	152	2.3%
Pulp	54	64	71	71	70	127	82	13	32	12	26	26	31	23	-26.7%
Consumption	(1000 tons)	(1000 tons)	(1000 tons)	(1000 tons)	(1000 tons)	(1000 tons)	(1000 tons)	(1000 tons)	(1000 tons)	(1000 tons)	(1000 tons)	(1000 tons)	(1000 tons)	(1000 tons)	
Paper	1873	1956	2017	2162	2301	2533	2638	478	519	497	557	586	671	694	3.3%
Pulp	1608	1650	1645	1446	1648	1804	1817	375	422	379	426	427	492	481	-2.2%
Value	(mill. rand)	(mill. rand)	(mill. rand)	(mill. rand)	(mill. rand)	(mill. rand)	(mill. rand)	(mill. rand)	(mill. rand)	(mill. rand)	(mill. rand)	(mill. rand)	(mill. rand)	(mill. rand)	
Value of paper production	10428	12357	11659	11753	11938	13179	14911	2616	2839	2797	2899	3190	3491	3526	1.0%
Value of pulp exports	2320	2737	2570	2484	2445	2851	3747	602	576	630	561	562	894	908	1.5%
Value of paper exports	2704	3429	2746	2716	2481	2816	3684	727	620	582	608	588	747	844	13.1%
Notes															
‡ Import data are obtained from the Customs and Excise data. The following tariff headings were used to calculate paper imports: 4801 - 4816															

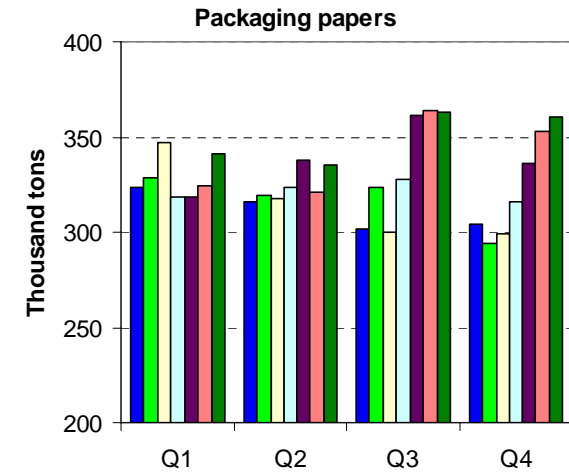
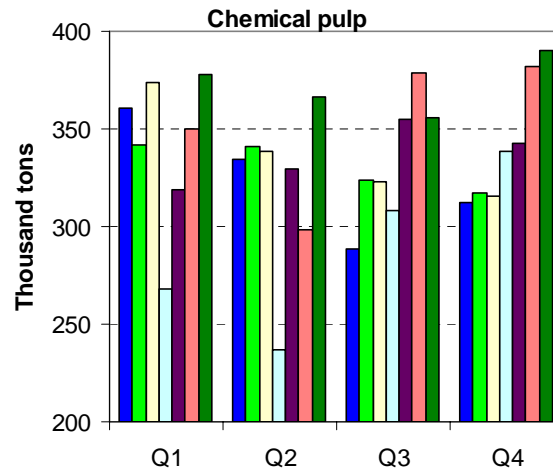
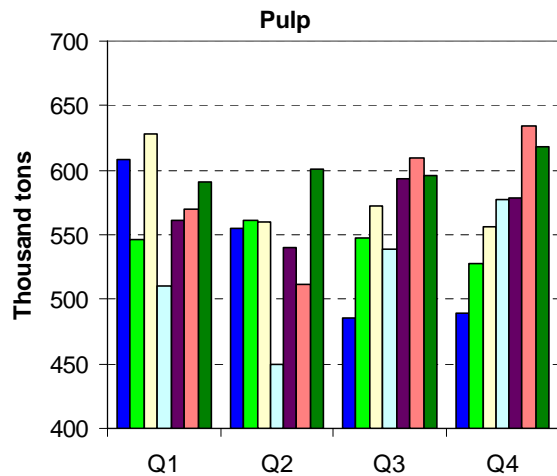
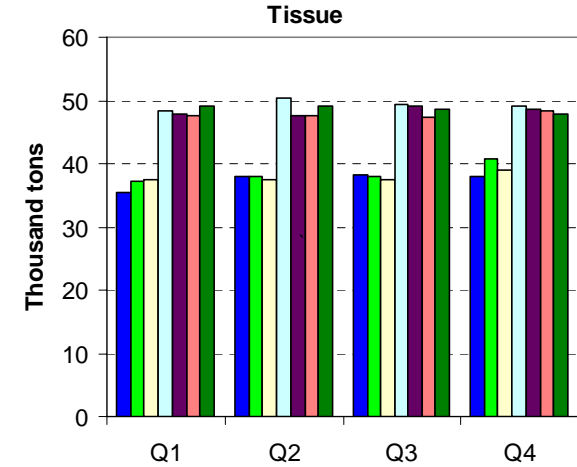
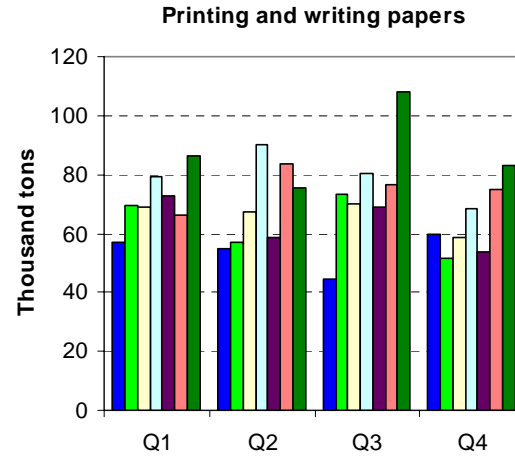
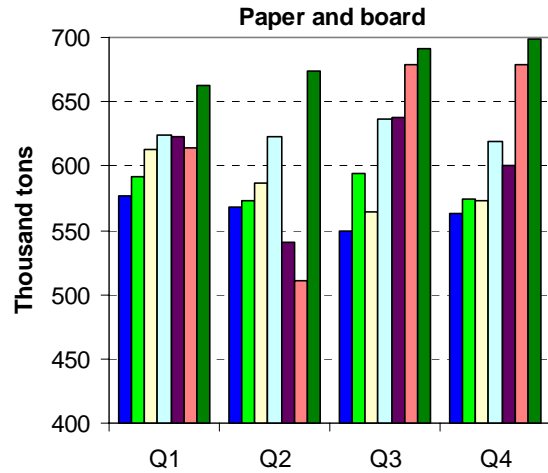
Table 2. Pulp and paper production

Pulp and Paper Production thousand tons	1999	2000	2001					2002					2003					
			Q1	Q2	Q3	Q4	YTD	Q1	Q2	Q3	Q4	YTD	Q1	Q2	Q3	Q4	YTD	
PAPER & BOARD																		
PRINTING AND WRITING PAPERS	834	852	218	214	210	222	863	226	215	233	239	913	228	231	227	235	920	
Uncoated paper	339	361	87	92	92	111	382	103	89	100	112	404	93	99	105	109	405	
Coated paper	75	66	18	15	11	18	62	20	19	22	19	80	22	17	17	21	77	
Newsprint & telephone directory paper	328	333	86	84	85	74	329	81	86	85	89	341	87	88	79	87	341	
SC mech. & lightweight coated paper	92	92	27	23	23	18	91	22	22	26	19	88	26	27	26	18	98	
PACKAGING PAPERS	1062	1138	324	316	301	304	1245	328	320	323	294	1265	347	318	300	300	1265	
Liner board	646	711	210	205	194	194	802	211	203	208	192	815	228	211	201	201	840	
Fluting	213	216	60	59	56	57	232	59	59	60	51	229	58	53	56	59	225	
Other kraft, paperboard & fibreboard	203	211	54	52	52	53	211	58	57	55	52	222	62	55	44	40	200	
TISSUE PAPER	145	134	35	38	38	38	150	37	38	38	41	154	37	37	38	39	152	
Tissue paper	145	134	35	38	38	38	150	37	38	38	41	154	37	37	38	39	152	
TOTAL PAPER & BOARD	2041	2124	577	567	550	564	2258	591	573	594	574	2332	613	586	565	573	2337	
PULP																		
Mechanical pulp	270	285	79	74	74	48	274	71	71	74	68	285	75	67	72	64	277	
Semi-chemical pulp			42	43	44	42	171	46	39	36	34	155	39	36	41	38	155	
Chemical pulp	1372	1419	360	334	288	312	1296	342	341	324	317	1323	373	338	323	315	1350	
Dissolving pulp	476	557	126	104	80	87	397	87	110	114	109	420	140	119	137	139	535	
TOTAL PULP	2118	2261	608	555	486	489	2138	546	562	548	528	2183	628	560	573	556	2317	

Pulp and Paper Production thousand tons	2004					2005					2006				
	Q1	Q2	Q3	Q4	YTD	Q1	Q2	Q3	Q4	YTD	Q1	Q2	Q3	Q4	YTD
PAPER & BOARD															
PRINTING AND WRITING PAPERS	257	248	260	254	1019	256	236	228	216	936	242	270	267	278	1056
Uncoated paper	128	119	125	124	497	122	120	120	106	468	136	166	162	171	635
Coated paper	19	19	19	20	77	22	22	20	21	85	22	18	20	19	78
Newsprint & telephone directory paper	85	85	89	82	342	85	83	88	89	344	84	86	85	88	343
SC mech. & lightweight coated paper	25	25	26	28	105	27	12			39					
PACKAGING PAPERS	318	324	328	316	1285	319	338	361	336	1354	324	321	364	353	1363
Liner board	200	200	207	208	815	194	208	218	203	824	198	192	221	213	824
Fluting	70	72	75	71	288	74	77	81	76	308	76	80	83	87	325
Other kraft, paperboard & fibreboard	48	52	46	37	183	51	53	62	56	222	50	50	61	54	214
TISSUE PAPER	48	50	49	49	197	48	47	49	49	193	48	48	47	48	191
Tissue paper	48	50	49	49	197	48	47	49	49	193	48	48	47	48	191
TOTAL PAPER & BOARD	624	622	637	619	2502	623	622	638	601	2483	614	639	678	679	2610
PULP															
Mechanical pulp	77	63	65	70	275	75	55	58	59	248	56	58	59	80	254
Semi-chemical pulp	27	23	31	29	111	33	31	36	34	134	31	31	35	36	132
Chemical pulp	268	236	308	338	1151	319	330	355	342	1345	350	299	378	382	1410
Dissolving pulp	137	128	134	140	539	134	125	145	143	547	133	124	137	135	529
TOTAL PULP	510	450	538	578	2076	562	540	594	579	2274	570	511	609	634	2325

Pulp and Paper Production thousand tons	2007				YTD	YTD Change
	Q1	Q2	Q3	Q4		
PAPER & BOARD						
PRINTING AND WRITING PAPERS	272	290	280	290	1132	7.2%
Uncoated paper	176	184	171	178	709	11.7%
Coated paper	16	17	19	21	73	-6.5%
Newsprint & telephone directory paper	80	88	90	91	349	1.9%
SC mech. & lightweight coated paper						
PACKAGING PAPERS	341	336	363	361	1400	2.7%
Liner board	207	193	220	215	835	1.4%
Fluting	81	86	88	92	347	6.9%
Other kraft, paperboard & fibreboard	53	56	55	54	218	1.6%
TISSUE PAPER	49	49	48	48	195	2.0%
Tissue paper	49	49	48	48	195	2.0%
TOTAL PAPER & BOARD	662	674	691	699	2727	4.5%
PULP						
Mechanical pulp	55	59	61	64	238	-6.2%
Semi-chemical pulp	30	34	36	34	135	2.0%
Chemical pulp	378	367	355	390	1489	5.7%
Dissolving pulp	128	141	143	130	543	2.7%
TOTAL PULP	591	601	596	618	2406	3.5%

Production trends



Legend

2001

2002

2003

2004

2005

2006

2007

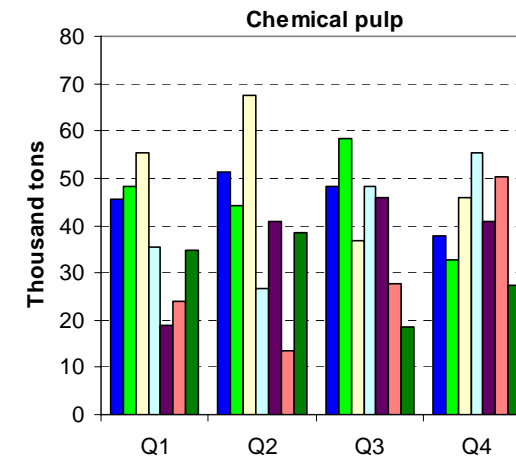
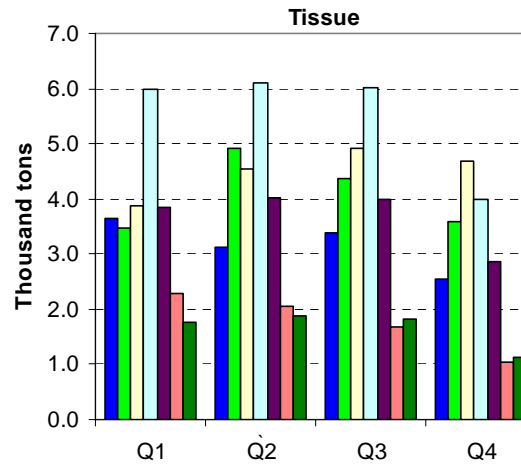
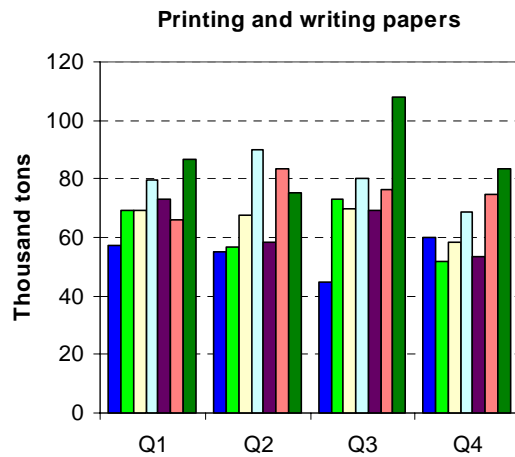
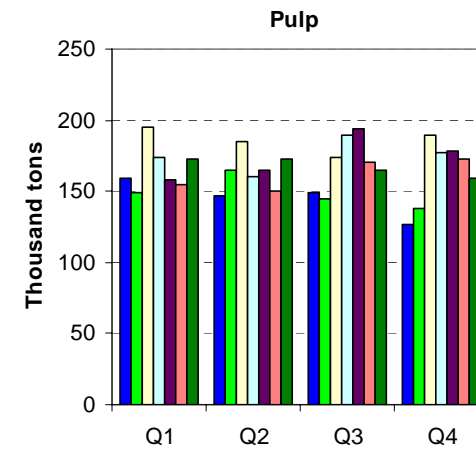
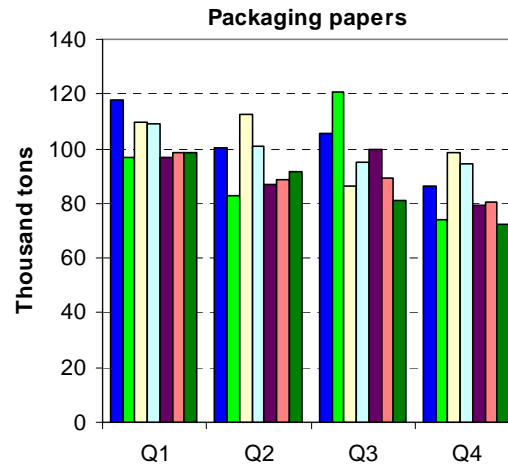
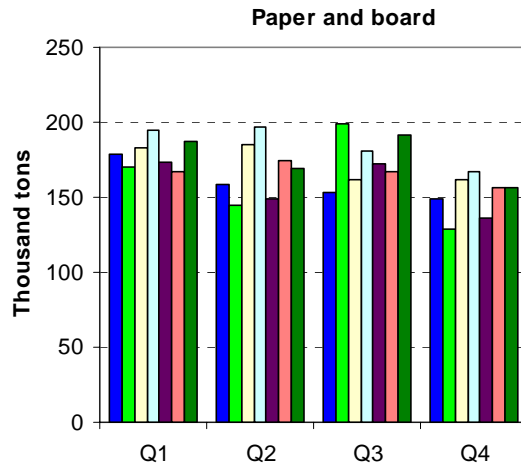
Table 3. Pulp and paper exports

Pulp and Paper Exports thousand tons	1999	2000	2001					2002					2003				
			Q1	Q2	Q3	Q4	YTD	Q1	Q2	Q3	Q4	YTD	Q1	Q2	Q3	Q4	YTD
PAPER & BOARD																	
PRINTING AND WRITING PAPERS	257	241	57	55	45	60	216	69	57	73	52	251	69	67	70	58	265
Uncoated paper	105	87	14	23	18	33	87	32	27	27	16	101	28	35	36	34	132
Coated paper	4	7	1	1	1	1	5	1	1	2	1	5	1	2	2	1	6
Newsprint & telephone directory paper	106	104	29	23	18	18	88	23	21	33	26	102	28	20	22	18	88
SC mech. & lightweight coated paper	42	43	13	7	8	9	36	13	8	12	9	43	12	11	10	5	38
PACKAGING PAPERS	337	425	118	100	106	86	410	97	83	121	74	375	110	113	87	99	408
Liner board	287	348	104	84	94	79	361	87	75	111	67	341	101	103	74	85	363
Fluting	31	54	7	9	5	4	26	7	4	6	4	21	7	8	8	7	29
Other kraft, paperboard & fibreboard	19	23	7	7	6	3	23	3	4	4	2	13	2	2	4	7	15
TISSUE PAPER	18	13	4	3	3	3	13	3	5	4	4	16	4	5	5	5	18
Tissue paper	18	13	4	3	3	3	13	3	5	4	4	16	4	5	5	5	18
TOTAL PAPER & BOARD	612	679	179	158	154	149	639	170	145	199	129	642	182	185	162	162	690
PULP																	
Mechanical pulp																	
Semi-chemical pulp																	
Chemical pulp	280	209	45	51	48	38	183	48	44	58	33	183	55	68	37	46	205
Dissolving pulp	448	557	114	96	101	89	400	101	121	86	106	413	140	117	137	144	538
TOTAL PULP	728	766	160	147	150	127	583	149	165	145	138	597	195	185	174	190	744

Pulp and Paper Exports thousand tons	2004					2005					2006				
	Q1	Q2	Q3	Q4	YTD	Q1	Q2	Q3	Q4	YTD	Q1	Q2	Q3	Q4	YTD
PAPER & BOARD															
PRINTING AND WRITING PAPERS	80	90	80	69	318	73	58	69	54	254	66	83	76	75	301
Uncoated paper	41	56	42	42	181	43	40	52	46	181	55	75	70	70	271
Coated paper	2	2	3	2	9	2	1	2	1	7	2	2	3	2	9
Newsprint & telephone directory paper	25	22	23	13	82	18	14	14	6	52	9	6	3	3	21
SC mech. & lightweight coated paper	12	9	12	11	46	9	3	1	0	14					
PACKAGING PAPERS	109	101	95	94	399	97	87	100	79	363	99	89	89	80	357
Liner board	85	81	76	85	327	80	72	84	71	307	84	77	74	68	303
Fluting	10	9	7	5	31	7	6	5	3	22	7	6	6	9	27
Other kraft, paperboard & fibreboard	14	11	13	4	42	10	8	11	5	34	8	6	9	4	26
TISSUE PAPER	6	6	6	4	22	4	4	4	3	15	2	2	2	1	7
Tissue paper	6	6	6	4	22	4	4	4	3	15	2	2	2	1	7
TOTAL PAPER & BOARD	195	197	181	167	740	174	149	173	136	631	167	174	167	156	664
PULP															
Mechanical pulp															
Semi-chemical pulp															
Chemical pulp	36	27	48	55	166	19	41	46	41	146	24	14	28	50	116
Dissolving pulp	138	133	142	122	535	140	124	148	137	549	131	136	142	122	532
TOTAL PULP	174	160	190	178	701	158	165	194	178	696	155	150	170	173	647

Pulp and Paper Exports thousand tons	2007				YTD	YTD Change
	Q1	Q2	Q3	Q4		
PAPER & BOARD						
PRINTING AND WRITING PAPERS	86	75	108	83	353	17.5%
Uncoated paper	82	68	95	75	320	17.9%
Coated paper	3	3	3	2	10	17.5%
Newsprint & telephone directory paper	2	5	10	6	24	11.8%
SC mech. & lightweight coated paper				0	0	
PACKAGING PAPERS	99	92	81	72	344	-3.6%
Liner board	83	72	69	62	285	-5.9%
Fluting	9	12	7	8	35	30.5%
Other kraft, paperboard & fibreboard	7	8	5	3	23	-12.5%
TISSUE PAPER	2	2	2	1	7	-7.1%
Tissue paper	2	2	2	1	7	-7.1%
TOTAL PAPER & BOARD	187	169	191	157	704	5.9%
PULP						
Mechanical pulp						
Semi-chemical pulp						
Chemical pulp	35	38	19	27	119	3.1%
Dissolving pulp	138	135	146	132	551	3.7%
TOTAL PULP	173	173	165	159	671	3.6%

Export trends



Legend 2001 2002 2003 2004 2005 2006 2007

Table 4. Value of production

Value of total production million Rand	2001					2002					2003				
	Q1	Q2	Q3	Q4	Total	Q1	Q2	Q3	Q4	Total	Q1	Q2	Q3	Q4	Total
Paper	2 579	2 591	2 642	2 616	10 428	2 975	3 125	3 418	2 839	12 357	3 079	2 852	2 932	2 797	11 659
PRINTING AND WRITING GRADES	1 196	1 209	1 203	1 266	4 874	1 431	1 446	1 532	1 350	5 758	1 489	1 373	1 439	1 301	5 602
PACKAGING PAPERS	1 109	1 085	1 133	1 064	4 390	1 263	1 387	1 577	1 186	5 414	1 282	1 165	1 152	1 174	4 772
TISSUE PAPERS	274	297	306	286	1 164	281	293	309	303	1 186	308	313	342	322	1 286

Value of total production million Rand	2004					2005					2006				
	Q1	Q2	Q3	Q4	Total	Q1	Q2	Q3	Q4	Total	Q1	Q2	Q3	Q4	Total
Paper	2 834	2 998	3 022	2 899	11 753	2 660	2 865	3 223	3 190	11 938	3 032	3 136	3 521	3 491	13 179
PRINTING AND WRITING GRADES	1 325	1 388	1 390	1 413	5 515	1 221	1 273	1 432	1 379	5 305	1 341	1 459	1 642	1 671	6 114
PACKAGING PAPERS	1 132	1 241	1 253	1 124	4 750	1 084	1 213	1 398	1 293	4 987	1 266	1 252	1 440	1 346	5 305
TISSUE PAPERS	377	369	379	362	1 488	355	380	393	518	1 646	425	424	438	474	1 761

Value of total production million Rand	2007					YTD
	Q1	Q2	Q3	Q4	Total	Change
Paper	3 646	3 707	4 032	3 526	14 911	13.1%
PRINTING AND WRITING GRADES	1 705	1 740	1 950	1 665	7 059	15.5%
PACKAGING PAPERS	1 462	1 482	1 586	1 450	5 981	12.7%
TISSUE PAPERS	479	485	496	411	1 871	6.3%

Table 5. Value of exported production

Value of exported production million Rand	2001					2002					2003				
	Q1	Q2	Q3	Q4	Total	Q1	Q2	Q3	Q4	Total	Q1	Q2	Q3	Q4	Total
Pulp	685	566	467	602	2 320	743	740	677	576	2 737	658	652	630	630	2 570
Paper	652	685	640	727	2 704	960	797	1 051	620	3 429	788	724	653	582	2 746
PRINTING AND WRITING GRADES	282	285	220	338	1 125	451	345	411	256	1 463	350	317	325	254	1 246
PACKAGING PAPERS	345	380	400	370	1 495	477	413	603	334	1 827	408	373	296	295	1 371
TISSUE PAPERS	24	19	21	19	84	32	39	37	30	139	31	33	32	33	129

Value of exported production million Rand	2004					2005					2006				
	Q1	Q2	Q3	Q4	Total	Q1	Q2	Q3	Q4	Total	Q1	Q2	Q3	Q4	Total
Pulp	622	615	686	561	2 484	568	603	711	562	2 445	561	596	799	894	2 851
Paper	721	721	666	608	2 716	608	576	709	588	2 481	637	683	750	747	2 816
PRINTING AND WRITING GRADES	357	382	321	283	1 342	294	249	308	226	1 077	277	330	360	373	1 340
PACKAGING PAPERS	324	298	306	292	1 220	283	293	365	318	1 258	336	327	363	351	1 376
TISSUE PAPERS	41	40	40	33	154	31	34	36	45	146	24	26	27	23	100

Value of exported production million Rand	2007					YTD Change
	Q1	Q2	Q3	Q4	Total	
Pulp	933	942	965	908	3 747	31.5%
Paper	925	894	1 020	844	3 684	30.8%
PRINTING AND WRITING GRADES	474	466	619	486	2 044	52.6%
PACKAGING PAPERS	428	404	377	343	1 552	12.8%
TISSUE PAPERS	23	25	25	15	88	-12.5%

Trends in the value of production and exports

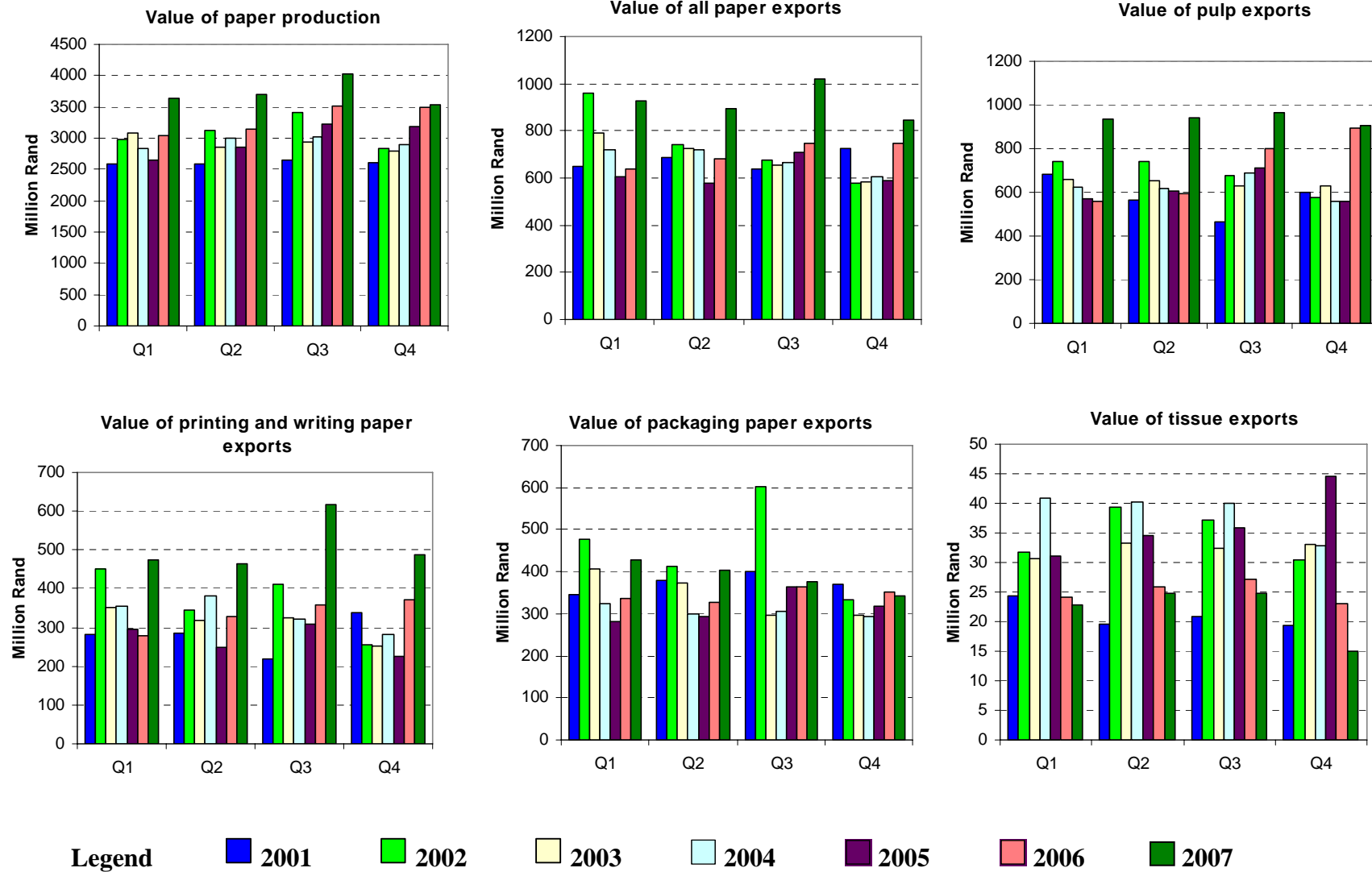


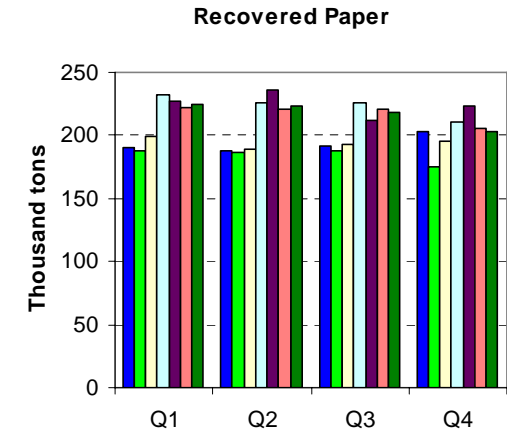
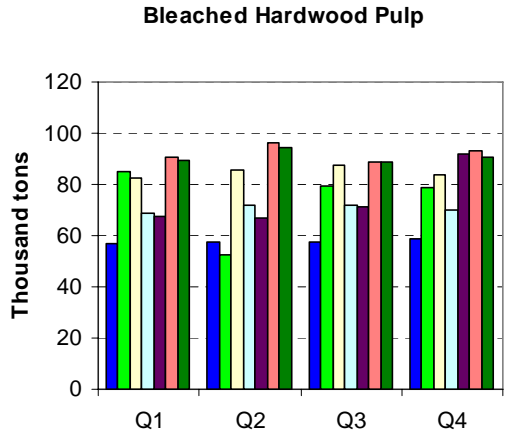
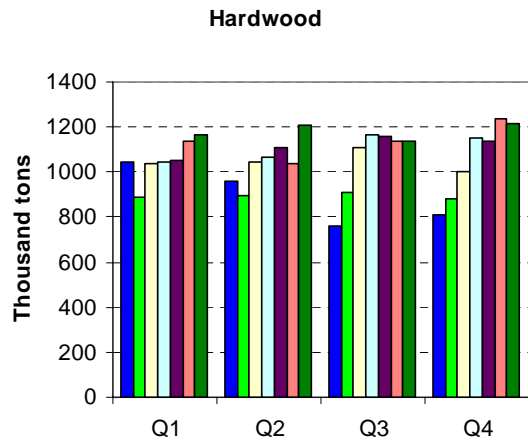
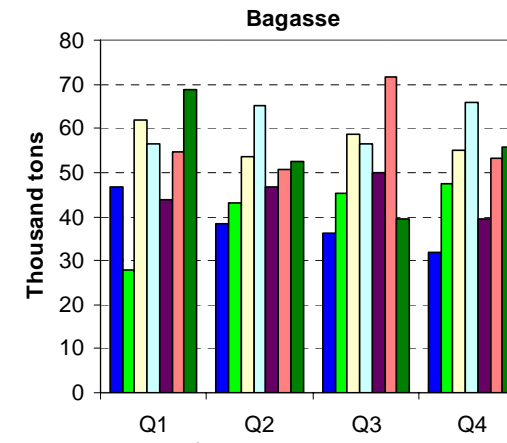
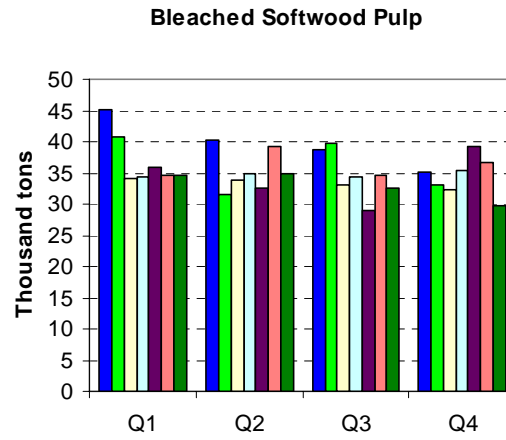
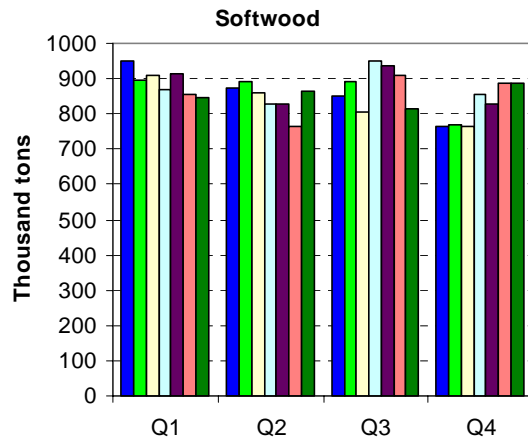
Table 6. Raw material consumption

Raw Materials consumed (Thousand metric tons)	2001					2002					2003			
	Q1	Q2	Q3	Q4	Total	Q1	Q2	Q3	Q4	Total	Q1	Q2	Q3	Q4
Total softwood (metric tons as received)	948	875	853	764	3 440	897	892	892	771	3 452	910	861	807	766
Pine - wood (round logs with bark)	859	772	763	670	3 063	800	788	788	695	3 072	813	769	713	715
Pine - chips	90	103	90	94	377	97	103	104	76	381	97	92	94	51
Total hardwood (metric tons as received)	1 046	960	763	808	3 576	885	895	909	882	3 572	1 039	1 047	1 106	1 001
Eucalyptus - wood (round logs without bark)	948	871	685	725	3 228	857	813	826	801	3 297	952	961	1 006	913
Eucalyptus - chips	1	1	1	2	6	1	1	1	2	5	2	1	2	1
Other hardwoods - wood (round logs without bark)	96	87	77	81	341	27	81	82	80	270	85	85	98	87
Other hardwood - chips														
Total bleached softwood pulp (air dried metric tons)	45	40	39	35	159	41	32	40	33	145	34	34	33	32
Bleached softwood pulp - sourced from mill in SA	31	26	29	30	116	31	24	32	27	114	26	25	25	25
Bleached softwood pulp - sourced from outside SA	14	14	10	5	43	9	8	8	6	31	8	9	8	8
Total unbleached softwood pulp (ad metric tons)	3	3	5	8	18	8	16	9	7	40	7	6	6	3
Unbleached softwood pulp - sourced from mill in SA	3	3	1	8	14	6	15	9	7	37	7	6	6	3
Unbleached softwood pulp - sourced from outside SA			4		4	2	1			3				
Total bleached hardwood pulp (ad metric tons)	57	58	57	59	231	85	52	80	79	296	83	86	87	84
Bleached hardwood pulp - sourced from mill in SA	57	58	57	59	231	85	52	80	79	296	80	81	81	79
Bleached hardwood pulp - sourced from outside SA											3	4	7	5
Total unbleached hardwood pulp (ad metric tons)	4	5	5	5	18	5	5	4	4	18	4	4	4	4
Unbleached hardwood pulp - sourced from mill in SA	4	5	5	5	18	5	5	4	4	18	4	4	4	4
Unbleached hardwood pulp - sourced from outside SA														
Bagasse (metric tons as received)	47	38	36	32	153	28	43	45	48	164	62	54	59	55
Recovered paper (metric tons as received)	190	188	192	204	773	187	187	188	176	738	199	190	193	195
Brown grades	129	121	125	134	510	120	117	121	112	470	127	124	125	137
White grades	60	67	67	69	263	67	70	67	63	268	71	65	68	58

Raw Materials consumed (Thousand metric tons)	2004					2005					2006				
	Q1	Q2	Q3	Q4	Total	Q1	Q2	Q3	Q4	Total	Q1	Q2	Q3	Q4	Total
Total softwood (metric tons as received)	868	826	949	854	3 497	914	828	938	829	3 510	855	763	909	887	3 413
Pine - wood (round logs with bark)	789	690	797	717	2 993	774	681	772	682	2 910	719	636	757	750	2 862
Pine - chips	79	136	152	137	504	140	147	166	147	600	136	126	152	137	551
Total hardwood (metric tons as received)	1 043	1066	1164	1150	4 423	1 053	1111	1160	1139	4 463	1 138	1 039	1 139	1 234	4 550
Eucalyptus - wood (round logs without bark)	928	956	1042	1041	3 967	926	982	1057	1017	3 981	1 002	932	1 041	1 146	4 121
Eucalyptus - chips	23	31	29	26	108	31	30	28	33	121	26	26	30	25	107
Other hardwoods - wood (round logs without bark)	91	80	93	83	347	97	99	75	89	361	110	81	68	63	322
Other hardwood - chips		0	0	0			0	0	0						
Total bleached softwood pulp (air dried metric tons)	34	35	34	35	139	36	32	29	39	137	35	39	35	37	145
Bleached softwood pulp - sourced from mill in SA	22	28	26	28	104	27	27	26	37	117	30	36	29	34	129
Bleached softwood pulp - sourced from outside SA	12	7	8	8	35	9	5	3	2	19	4	3	5	3	16
Total unbleached softwood pulp (ad metric tons)	4	3	3	3	12	2	2	1	3	8	4	3	3	3	12
Unbleached softwood pulp - sourced from mill in SA	4	3	3	3	12	2	2	1	3	8					1
Unbleached softwood pulp - sourced from outside SA		0	0	0			0	0	0		3	3	3	2	11
Total bleached hardwood pulp (ad metric tons)	69	72	72	70	282	67	67	71	92	298	90	96	89	93	368
Bleached hardwood pulp - sourced from mill in SA	65	68	70	66	269	57	54	66	86	263	88	95	88	92	363
Bleached hardwood pulp - sourced from outside SA	3	4	2	3	13	10	13	5	6	34	3	1		1	5
Total unbleached hardwood pulp (ad metric tons)	4	4	3	3	13	4	4	4	5	17	9	7	9	7	32
Unbleached hardwood pulp - sourced from mill in SA	4	4	3	3	13	4	4	4	5	17	9	7	9	7	32
Unbleached hardwood pulp - sourced from outside SA		0	0	0			0	0	0						
Bagasse (metric tons as received)	56	65	57	66	244	44	47	50	39	180	55	51	72	53	230
Recovered paper (metric tons as received)	233	226	226	210	895	228	237	212	223	899	222	221	221	205	869
Brown grades	158	155	156	146	615	159	168	141	152	619	153	152	150	145	600
White grades	75	71	70	64	280	69	69	71	71	279	69	69	71	60	269

Raw Materials consumed (Thousand metric tons)	2007				Total	YTD Change
	Q1	Q2	Q3	Q4		
Total softwood (metric tons as received)	846	864	816	886	3 413	0.0%
Pine - wood (round logs with bark)	718	728	667	754	2 867	0.2%
Pine - chips	128	136	149	133	546	-0.9%
Total hardwood (metric tons as received)	1 167	1 208	1 137	1 214	4 727	3.9%
Eucalyptus - wood (round logs without bark)	1 095	1 132	1 063	1 134	4 423	7.3%
Eucalyptus - chips	25	26	30	29	109	1.9%
Other hardwoods - wood (round logs without bark)	48	51	45	52	195	-39.4%
Other hardwood - chips						
Total bleached softwood pulp (air dried metric tons)	35	35	32	30	132	-9.2%
Bleached softwood pulp - sourced from mill in SA	33	34	31	28	125	-2.9%
Bleached softwood pulp - sourced from outside SA	2	1	2	1	6	-59.8%
Total unbleached softwood pulp (ad metric tons)	3	4	2	2	11	-9.5%
Unbleached softwood pulp - sourced from mill in SA					1	16.8%
Unbleached softwood pulp - sourced from outside SA	2	4	2	2	10	-12.1%
Total bleached hardwood pulp (ad metric tons)	90	94	88	91	363	-1.4%
Bleached hardwood pulp - sourced from mill in SA	88	94	88	90	361	-0.8%
Bleached hardwood pulp - sourced from outside SA	1	1		1	3	-45.4%
Total unbleached hardwood pulp (ad metric tons)	8	8	8	10	33	3.3%
Unbleached hardwood pulp - sourced from mill in SA	8	8	8	10	33	3.3%
Unbleached hardwood pulp - sourced from outside SA						-53.1%
Bagasse (metric tons as received)	69	52	39	56	216	-6.0%
Recovered paper (metric tons as received)	224	223	219	203	869	0.1%
Brown grades	156	157	154	150	618	3.0%
White grades	68	66	65	53	252	-6.5%

Raw material consumption trends



Legend ■ 2001 ■ 2002 ■ 2003 ■ 2004 ■ 2005 ■ 2006 ■ 2007

Data extracted from South African Revenue Services Records

Table 7. Summary of South African trade in wood, pulp, paper and their products by value

Imports							Exports						
Values in million Rands		Wood	Pulp	Paper (4801 - 4816)	Paper Products (4817 - 4823)	TOTAL	Values in million Rands		Wood	Pulp	Paper (4801 - 4816)	Paper Products (4817 - 4823)	TOTAL
2000	Total	1 012	280	2 010	430	3 732	2000	Total	2 269	3 429	2 264	611	8 573
2001	Total	1 095	216	2 227	490	4 028	2001	Total	2 723	2 615	3 098	860	9 296
2002	Jan-Mar	435	54	926	156	1 571	2002	Jan-Mar	923	911	887	239	2 961
	Apr-Jun	322	39	683	143	1 187		Apr-Jun	896	708	733	296	2 632
	Jul-Sep	348	67	736	131	1 282		Jul-Sep	811	579	825	249	2 464
	Oct-Dec	369	130	739	168	1 406		Oct-Dec	1 151	696	791	233	2 871
	Total	1 473	291	3 084	598	5 447		Total	3 780	2 894	3 237	1 017	10 929
2003	Jan-Mar	422	88	755	148	1 413	2003	Jan-Mar	920	759	764	247	2 690
	Apr-Jun	355	34	687	140	1 215		Apr-Jun	881	686	688	252	2 507
	Jul-Sep	302	73	746	142	1 262		Jul-Sep	907	680	755	241	2 583
	Oct-Dec	300	41	627	190	1 157		Oct-Dec	660	669	689	156	2 174
	Total	1 379	235	2 815	619	5 048		Total	3 368	2 794	2 897	896	9 954
2004	Jan-Mar	430	45	638	144	1 257	2004	Jan-Mar	890	680	847	152	2 568
	Apr-Jun	317	71	630	119	1 138		Apr-Jun	953	687	697	133	2 470
	Jul-Sep	382	38	743	183	1 346		Jul-Sep	681	355	603	116	1 754
	Oct-Dec	358	84	730	211	1 383		Oct-Dec	706	757	639	158	2 260
	Total	1 487	238	2 742	657	5 125		Total	3 229	2 480	2 785	558	9 052
2005	Jan-Mar	486	58	759	136	1 438	2005	Jan-Mar	759	627	810	107	2 303
	Apr-Jun	471	72	751	148	1 441		Apr-Jun	1 054	620	596	133	2 404
	Jul-Sep	519	26	810	235	1 591		Jul-Sep	949	662	597	159	2 367
	Oct-Dec	479	87	826	206	1 598		Oct-Dec	740	690	619	171	2 220
	Total	1 955	243	3 146	724	6 068		Total	3 502	2 599	2 623	571	9 295
2006	Jan-Mar	550	80	921	199	1 751	2006	Jan-Mar	592	677	650	128	2 048
	Apr-Jun	567	115	948	222	1 851		Apr-Jun	711	656	769	145	2 282
	Jul-Sep	591	125	1 110	285	2 110		Jul-Sep	852	761	811	168	2 592
	Oct-Dec	595	125	1 142	413	2 276		Oct-Dec	678	959	842	160	2 639
	Total	2 304	445	4 121	1 119	7 989		Total	2 834	3 053	3 073	601	9 562
2007	Jan-Mar	717	83	1 252	376	2 428	2007	Jan-Mar	617	836	966	125	2 544
	Apr-Jun	619	78	1 253	319	2 269		Apr-Jun	797	878	933	143	2 751
	Jul-Sep	721	136	1 274	356	2 487		Jul-Sep	717	952	949	184	2 802
	Oct-Dec	778	119	1 273	397	2 567		Oct-Dec	593	951	1 009	181	2 734
	Total	2 836	416	5 053	1 448	9 752		Total	2 724	3 617	3 856	632	10 830

Table 8. Summary of South African trade in wood, pulp, paper and their products by mass

Imports							Exports						
Values in tons		Wood	Pulp	Paper (4801 - 4816)	Paper Products (4817 - 4823)	TOTAL	Values in tons		Wood	Pulp	Paper (4801 - 4816)	Paper Products (4817 - 4823)	TOTAL
2000	Total		72 831	282 800	24 777	380 408	2000	Total		892 068	687 989	126 584	1 706 641
2001	Total		52 904	254 076	22 771	329 751	2001	Total		583 509	800 614	119 370	1 503 493
2002	Jan-Mar		10 947	60 939	5 749	77 635	2002	Jan-Mar		186 856	178 360	26 206	391 422
	Apr-Jun		5 328	57 233	5 293	67 854		Apr-Jun		296 782	141 429	30 639	468 849
	Jul-Sep		15 413	73 639	4 524	93 575		Jul-Sep		- 15 727	157 607	24 720	166 600
	Oct-Dec		32 346	73 527	6 166	112 039		Oct-Dec		165 809	168 867	26 010	360 686
	Total		64 033	265 338	21 732	351 103		Total		633 719	646 263	107 575	1 387 558
2003	Jan-Mar		27 642	93 788	7 208	128 638	2003	Jan-Mar		223 145	189 494	31 646	444 284
	Apr-Jun		9 549	91 713	6 898	108 161		Apr-Jun		194 385	180 699	37 553	412 638
	Jul-Sep		21 554	100 130	6 950	128 634		Jul-Sep		189 351	194 324	28 622	412 297
	Oct-Dec		12 436	85 482	10 546	108 463		Oct-Dec		206 065	191 211	19 096	416 371
	Total		71 181	371 113	31 601	473 896		Total		812 946	755 728	116 916	1 685 590
2004	Jan-Mar		13 341	91 306	8 506	113 153	2004	Jan-Mar		185 742	210 367	14 219	410 328
	Apr-Jun		21 931	89 880	7 802	119 613		Apr-Jun		160 477	194 760	14 226	369 464
	Jul-Sep		10 321	112 526	10 271	133 119		Jul-Sep		110 494	175 803	9 914	296 212
	Oct-Dec		25 636	105 723	12 625	143 983		Oct-Dec		208 524	198 490	12 997	420 011
	Total		71 230	399 435	39 204	509 868		Total		665 237	779 421	51 357	1 496 014
2005	Jan-Mar		17 384	111 597	9 836	138 817	2005	Jan-Mar		201 485	241 975	13 466	456 926
	Apr-Jun		20 394	102 447	9 229	132 070		Apr-Jun		200 564	179 036	17 434	397 034
	Jul-Sep		5 781	114 114	12 664	132 559		Jul-Sep		203 100	172 379	17 445	392 923
	Oct-Dec		26 048	121 266	11 821	159 136		Oct-Dec		201 671	158 808	18 639	379 118
	Total		69 608	449 425	43 550	562 583		Total		806 820	752 198	66 984	1 626 001
2006	Jan-Mar		24 504	140 287	12 904	177 695	2006	Jan-Mar		164 836	178 641	16 710	360 186
	Apr-Jun		36 564	147 309	13 057	196 930		Apr-Jun		183 554	196 144	11 874	391 572
	Jul-Sep		34 612	151 866	14 772	201 251		Jul-Sep		199 721	175 927	14 847	390 494
	Oct-Dec		31 067	148 421	18 797	198 285		Oct-Dec		213 154	180 546	16 130	409 831
	Total		126 747	587 884	59 530	774 161		Total		761 265	731 258	59 560	1 552 083
2007	Jan-Mar		17 106	151 874	17 872	186 852	2007	Jan-Mar		191 820	203 439	9 367	404 626
	Apr-Jun		15 941	154 834	16 516	187 291		Apr-Jun		266 851	182 704	13 189	462 744
	Jul-Sep		25 770	156 226	17 696	199 692		Jul-Sep		197 222	177 903	17 403	392 528
	Oct-Dec		22 768	151 825	17 659	192 252		Oct-Dec		233 870	196 857	15 477	446 204
	Total		81 584	614 759	69 743	766 086		Total		889 764	760 902	55 437	1 706 103

Import and export trends

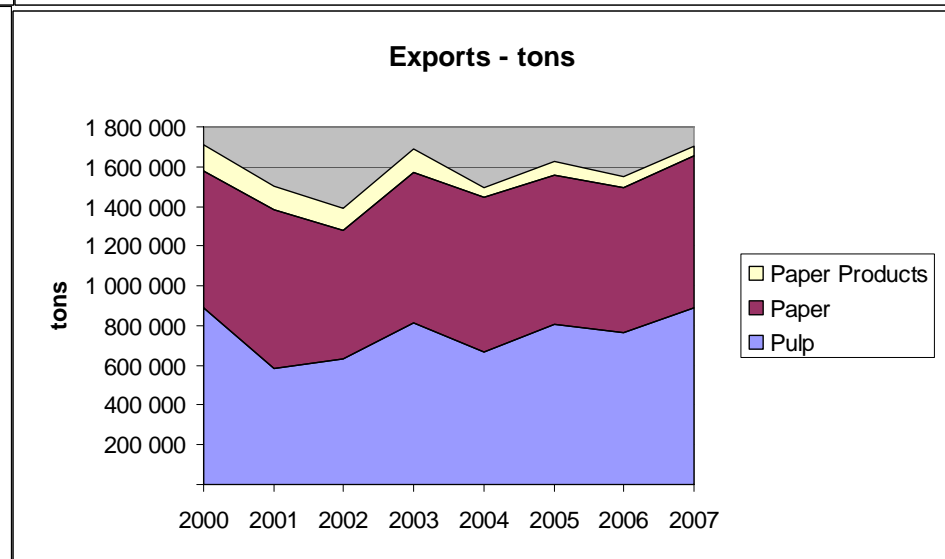
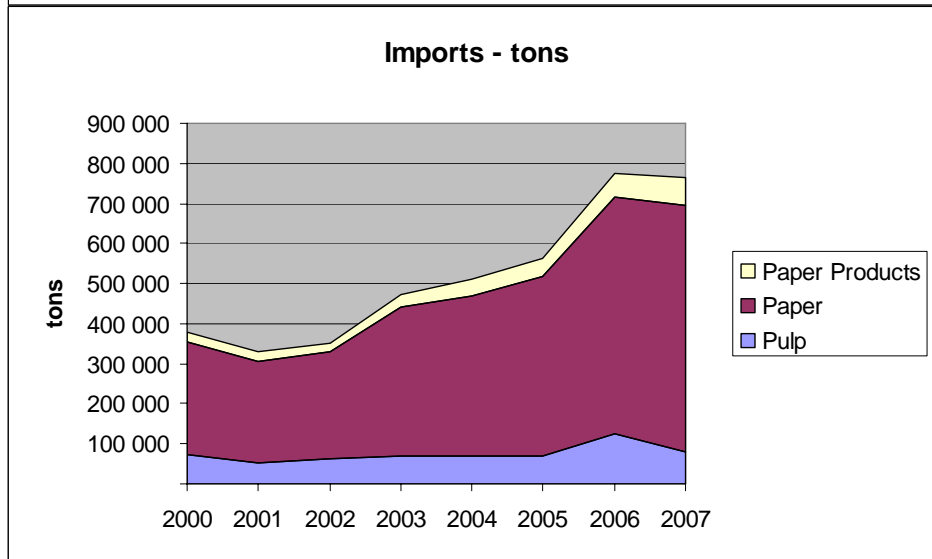
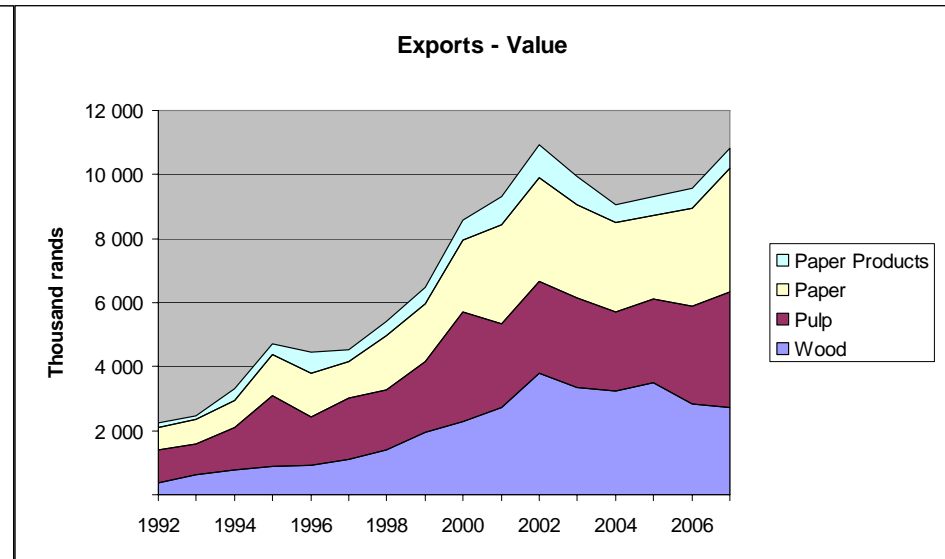
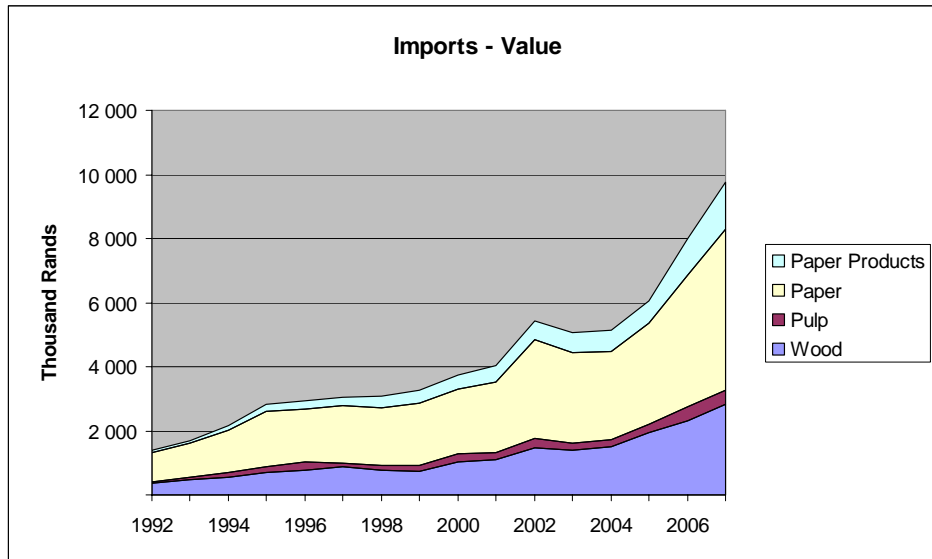


Table 9. Summary of South African trade in wood, pulp, paper and their products – 2000

Summary of SA Trade in Wood, Pulp, Paper and Paper Products - 2000					
(data source SARS)					
	Import		Export		Units of Quantity
	(million Rand)	Quantity	Value	Quantity	
Wood		-	1 012	-	2 269
Pulp		72 831	280	892 068	3 429 tons
Paper (4801- 4816)		282 800	2 010	687 989	2 264 tons
Paper Products (4817 - 4823)		24 777	430	126 584	611 tons
TOTAL			3 732		8 573

Table 10. Summary of South African trade in wood, pulp, paper and their products – 2001

Summary of SA Trade in Wood, Pulp, Paper and Paper Products - 2001					
(data source SARS)					
	Import		Export		Units of Quantity
	(million Rand)	Quantity	Value	Quantity	
Wood		-	1 095	-	2 723
Pulp		52 904	216	583 509	2 615 tons
Paper (4801- 4816)		254 076	2 227	800 614	3 098 tons
Paper Products (4817 - 4823)		22 771	490	119 370	860 tons
TOTAL			4 027		9 296

Table 11. Summary of South African trade in wood, pulp, paper and their products – 2002

Summary of SA Trade in Wood, Pulp, Paper and Paper Products - 2002					
(data source SARS)					
	Import		Export		Units of Quantity
	(million Rand)	Quantity	Value	Quantity	
Wood		-	1 473	-	3 780
Pulp		64 033	291	633 719	2 894 tons
Paper (4801- 4816)		265 338	3 084	646 263	3 237 tons
Paper Products (4817 - 4823)		21 732	598	107 575	1 017 tons
TOTAL			5 447		10 929

Table 12. Summary of South African trade in wood, pulp, paper and their products – 2003

Summary of SA Trade in Wood, Pulp, Paper and Paper Products - 2003					
(data source SARS)					
(million Rand)	Import		Export		Units of Quantity
	Quantity	Value	Quantity	Value	
Wood	-	1 379	-	3 368	
Pulp	71 181	235	812 946	2 794	tons
Paper (4801- 4816)	371 113	2 815	755 728	2 897	tons
Paper Products (4817 - 4823)	31 601	619	116 916	896	tons
TOTAL		5 048		9 954	

Table 13. Summary of South African trade in wood, pulp, paper and their products – 2004

Summary of SA Trade in Wood, Pulp, Paper and Paper Products - 2004					
(data source SARS)					
(million Rand)	Import		Export		Units of Quantity
	Quantity	Value	Quantity	Value	
Wood	-	1 487	-	3 229	
Pulp	71 230	238	665 237	2 480	tons
Paper (4801- 4816)	399 435	2 742	779 421	2 785	tons
Paper Products (4817 - 4823)	39 204	657	51 357	558	tons
TOTAL		5 125		9 052	

Table 14. Summary of South African trade in wood, pulp, paper and their products – 2005

Summary of SA Trade in Wood, Pulp, Paper and Paper Products - 2005					
(data source SARS)					
(million Rand)	Import		Export		Units of Quantity
	Quantity	Value	Quantity	Value	
Wood	-	1 955	-	3 501	
Pulp	69 608	243	806 820	2 600	tons
Paper (4801- 4816)	449 425	3 146	752 198	2 623	tons
Paper Products (4817 - 4823)	43 550	724	66 984	570	tons
TOTAL		6 069		9 294	

Table 15. Summary of South African trade in wood, pulp, paper and their products – 2006

Summary of SA Trade in Wood, Pulp, Paper and Paper Products - 2006						
(data source SARS)						
	(million Rand)	Import		Export		Units of Quantity
		Quantity	Value	Quantity	Value	
Wood		-	2 304	-	2 834	
Pulp		126 747	445	761 265	3 053	tons
Paper (4801- 4816)		587 884	4 121	731 258	3 073	tons
Paper Products (4817 - 4823)		59 530	1 119	59 560	601	tons
TOTAL			7 989		9 562	

Table 16. Summary of South African trade in wood, pulp, paper and their products – 2007

Summary of SA Trade in Wood, Pulp, Paper and Paper Products - 2007						
(data source SARS)						
	(million Rand)	Import		Export		Units of Quantity
		Quantity	Value	Quantity	Value	
Wood		-	2 836	-	2 724	
Pulp		81 584	416	889 764	3 617	tons
Paper (4801- 4816)		614 759	5 053	760 902	3 856	tons
Paper Products (4817 - 4823)		69 743	1 448	55 437	632	tons
TOTAL			9 752		10 830	

Table 17. Summary of South African trade in wood, pulp, paper and their products – January to March 2007

Summary of SA Trade in Wood, Pulp, Paper and Paper Products - 2007 Jan-Mar						
(data source SARS)						
	(million Rand)	Import		Export		Units of Quantity
		Quantity	Value	Quantity	Value	
Wood		-	717	-	617	
Pulp		17 106	83	191 820	836	tons
Paper (4801- 4816)		151 874	1 252	203 439	966	tons
Paper Products (4817 - 4823)		17 872	376	9 367	125	tons
TOTAL			2 428		2 544	

Table 18. Summary of South African trade in wood, pulp, paper and their products – April to June 2007

Summary of SA Trade in Wood, Pulp, Paper and Paper Products - 2007 Apr-Jun					
(data source SARS)	Import		Export		Units of Quantity
	(million Rand)	Quantity	Value	Quantity	
Wood	-	-	619	-	797
Pulp	15 941	15 941	78	266 851	878 tons
Paper (4801- 4816)	154 834	154 834	1 253	182 704	933 tons
Paper Products (4817 - 4823)	16 516	16 516	319	13 189	143 tons
TOTAL			2 269	2 751	

Table 19. Summary of South African trade in wood, pulp, paper and their products – July to September 2007

Summary of SA Trade in Wood, Pulp, Paper and Paper Products - 2007 Jul-Sep					
(data source SARS)	Import		Export		Units of Quantity
	(million Rand)	Quantity	Value	Quantity	
Wood	-	-	721	-	717
Pulp	25 770	25 770	136	197 222	952 tons
Paper (4801- 4816)	156 226	156 226	1 274	177 903	949 tons
Paper Products (4817 - 4823)	17 696	17 696	356	17 403	184 tons
TOTAL			2 487	2 802	

Table 20. Summary of South African trade in wood, pulp, paper and their products – October to December 2007

Summary of SA Trade in Wood, Pulp, Paper and Paper Products - 2007 Oct-Dec					
(data source SARS)	Import		Export		Units of Quantity
	(million Rand)	Quantity	Value	Quantity	
Wood	-	-	778	-	593
Pulp	22 768	22 768	119	233 870	951 tons
Paper (4801- 4816)	151 825	151 825	1 273	196 857	1 009 tons
Paper Products (4817 - 4823)	17 659	17 659	397	15 477	181 tons
TOTAL			2 567	2 734	

Table 21. Wood and wood products trade – 2001

Imports and Exports of Wood & Wood Products - 2001						
Tariff Head	Description	Import		Export		Units of Quantity
		Quantity	Value	Quantity	Value	
4401	Fuelwood, wood in chips, particles, etc.	-	2 624	-	1 464 258	Tons
4402	Charcoal	-	8 399	-	77 264	Tons
4403	Wood in the rough	-	26 353	-	152 310	1000 m3
4404	Hoopwood, split poles, stakes and sticks	-	25	-	10 393	Tons
4405	Wood wool & flour	-	512	-	37	Tons
4406	Railway sleepers	-	3 047	-	7 315	1000 m3
4407	Wood sawn or chipped lengthwise	-	514 143	-	123 366	1000 m3
4408	Veneer sheets & plywood	-	119 879	-	151 420	Tons
4409	Wood continuously shaped	-	40 346	-	19 083	Tons
4410	Particle board	-	5 643	-	22 885	Tons
4411	Fibreboard	-	62 232	-	77 730	Tons
4412	Plywood and veneered panels	-	42 467	-	8 141	Tons
4412	Plywood and veneered panels	-	23 016	-	3 806	1000 m3
4413	Densified wood	-	3 314	-	6 920	Tons
4414	Wooden picture frames	-	7 861	-	11 634	Tons
4415	Crates, pallets & cable drums	-	41 492	-	102 744	1000 units
4416	Barrels & casts	-	106 180	-	577	Tons
4417	Builders' joinery and carpentry (e.g. doors)	-	1 598	-	3 346	Tons
4418	Tool handles	-	31 415	-	401 824	Tons
4419	Table & kitchen ware	-	8 768	-	6 720	Tons
4420	Wood marquetry & inlaid wood	-	12 994	-	22 718	Tons
4421	Other articles of wood	-	32 757	-	48 762	Tons
TOTAL			1 095 065		2 723 252	

Table 22. Wood and wood products trade – 2002

Imports and Exports of Wood & Wood Products - 2002						
Tariff Head	Description	Import		Export		Units of Quantity
		Quantity	Value	Quantity	Value	
4401	Fuelwood, wood in chips, particles, etc.	-	3 797	-	1 964 092	Tons
4402	Charcoal	-	7 112	-	116 696	Tons
4403	Wood in the rough	-	29 171	-	268 256	1000 m3
4404	Hoopwood, split poles, stakes and sticks	-	170	-	21 289	Tons
4405	Wood wool & flour	-	582	-	24	Tons
4406	Railway sleepers	-	6 084	-	9 965	1000 m3
4407	Wood sawn or chipped lengthwise	-	654 831	-	180 472	1000 m3
4408	Veneer sheets & plywood	-	214 803	-	236 081	Tons
4409	Wood continuously shaped	-	49 462	-	28 696	Tons
4410	Particle board	-	11 311	-	39 389	Tons
4411	Fibreboard	-	71 918	-	101 332	Tons
4412	Plywood and veneered panels	-	70 430	-	11 307	Tons
4412	Plywood and veneered panels	-	23 460	-	7 255	1000 m3
4413	Densified wood	-	5 850	-	4 021	Tons
4414	Wooden picture frames	-	6 785	-	16 440	Tons
4415	Crates, pallets & cable drums	-	29 885	-	66 956	1000 units
4416	Barrels & casts	-	167 944	-	1 499	Tons
4417	Builders' joinery and carpentry (e.g. doors)	-	1 484	-	5 849	Tons
4418	Tool handles	-	48 331	-	625 347	Tons
4419	Table & kitchen ware	-	7 687	-	6 436	Tons
4420	Wood marquetry & inlaid wood	-	12 385	-	28 889	Tons
4421	Other articles of wood	-	49 941	-	39 999	Tons
	TOTAL		1 473 424		3 780 288	

Table 23. Wood and wood products trade – 2003

Imports and Exports of Wood & Wood Products - 2003						
Tariff Head	Description	Import		Export		Units of Quantity
		Quantity	Value	Quantity	Value	
4401	Fuelwood, wood in chips, particles, etc.	-	5 750	-	1 959 345	Tons
4402	Charcoal	-	8 034	-	87 425	Tons
4403	Wood in the rough	-	38 027	-	124 489	1000 m3
4404	Hoopwood, split poles, stakes and sticks	-	163	-	9 385	Tons
4405	Wood wool & flour	-	506	-	6	Tons
4406	Railway sleepers	-	8 146	-	1 282	1000 m3
4407	Wood sawn or chipped lengthwise	-	560 392	-	165 540	1000 m3
4408	Veneer sheets & plywood	-	166 518	-	214 880	Tons
4409	Wood continuously shaped	-	43 538	-	13 428	Tons
4410	Particle board	-	19 087	-	17 554	Tons
4411	Fibreboard	-	106 321	-	69 615	Tons
4412	Plywood and veneered panels	-	61 453	-	27 773	Tons
4412	Plywood and veneered panels	-	19 402	-	5 230	1000 m3
4413	Densified wood	-	3 241	-	4 950	Tons
4414	Wooden picture frames	-	6 401	-	12 232	Tons
4415	Crates, pallets & cable drums	-	20 466	-	31 012	1000 units
4416	Barrels & casts	-	182 643	-	1 822	Tons
4417	Builders' joinery and carpentry (e.g. doors)	-	1 973	-	3 955	Tons
4418	Tool handles	-	65 428	-	567 823	Tons
4419	Table & kitchen ware	-	6 324	-	4 375	Tons
4420	Wood marquetry & inlaid wood	-	12 349	-	18 276	Tons
4421	Other articles of wood	-	42 723	-	27 665	Tons
	TOTAL		1 378 884		3 368 062	

Table 24. Wood and wood products trade – 2004

Imports and Exports of Wood & Wood Products - 2004						
Tariff Head	Description	Import		Export		Units of Quantity
		Quantity	Value	Quantity	Value	
4401	Fuelwood, wood in chips, particles, etc.	-	4 386	-	1 962 052	Tons
4402	Charcoal	-	9 301	-	110 574	Tons
4403	Wood in the rough	-	30 510	-	133 317	1000 m3
4404	Hoopwood, split poles, stakes and sticks	-	164	-	21 045	Tons
4405	Wood wool & flour	-	396	-	9	Tons
4406	Railway sleepers	-	5 121	-	655	1000 m3
4407	Wood sawn or chipped lengthwise	-	631 997	-	99 576	1000 m3
4408	Veneer sheets & plywood	-	132 458	-	132 000	Tons
4409	Wood continuously shaped	-	57 944	-	11 892	Tons
4410	Particle board	-	38 039	-	18 965	Tons
4411	Fibreboard	-	122 968	-	57 298	Tons
4412	Plywood and veneered panels	-	66 482	-	27 536	Tons
4412	Plywood and veneered panels	-	29 651	-	4 586	1000 m3
4413	Densified wood	-	3 537	-	6 058	Tons
4414	Wooden picture frames	-	10 820	-	7 233	Tons
4415	Crates, pallets & cable drums	-	16 383	-	35 331	1000 units
4416	Barrels & casts	-	163 985	-	1 497	Tons
4417	Builders' joinery and carpentry (e.g. doors)	-	2 050	-	1 636	Tons
4418	Tool handles	-	71 805	-	543 697	Tons
4419	Table & kitchen ware	-	11 314	-	2 821	Tons
4420	Wood marquetry & inlaid wood	-	16 027	-	15 235	Tons
4421	Other articles of wood	-	61 669	-	36 342	Tons
	TOTAL		1 487 008		3 229 357	

Table 25. Wood and wood products trade – 2005

Imports and Exports of Wood & Wood Products - 2005						
Tariff Head	Description	Import		Export		Units of Quantity
		Quantity	Value	Quantity	Value	
4401	Fuelwood, wood in chips, particles, etc.	-	4 477	-	2 160 328	Tons
4402	Charcoal	-	11 198	-	142 215	Tons
4403	Wood in the rough	-	25 762	-	85 874	1000 m3
4404	Hoopwood, split poles, stakes and sticks	-	269	-	31 407	Tons
4405	Wood wool & flour	-	613	-	20	Tons
4406	Railway sleepers	-	2 414	-	630	1000 m3
4407	Wood sawn or chipped lengthwise	-	818 027	-	98 925	1000 m3
4408	Veneer sheets & plywood	-	159 505	-	130 045	Tons
4409	Wood continuously shaped	-	71 444	-	8 142	Tons
4410	Particle board	-	83 525	-	23 943	Tons
4411	Fibreboard	-	232 403	-	197 582	Tons
4412	Plywood and veneered panels	-	90 640	-	23 721	Tons
4412	Plywood and veneered panels	-	39 499	-	3 254	1000 m3
4413	Densified wood	-	3 249	-	2 317	Tons
4414	Wooden picture frames	-	12 599	-	5 090	Tons
4415	Crates, pallets & cable drums	-	7 234	-	28 196	1000 units
4416	Barrels & casts	-	146 303	-	1 884	Tons
4417	Builders' joinery and carpentry (e.g. doors)	-	2 878	-	1 564	Tons
4418	Tool handles	-	138 611	-	503 954	Tons
4419	Table & kitchen ware	-	13 677	-	2 986	Tons
4420	Wood marquetry & inlaid wood	-	19 685	-	19 424	Tons
4421	Other articles of wood	-	71 235	-	29 976	Tons
	TOTAL		1 955 245		3 501 477	

Table 26. Wood and wood products trade – 2006

Imports and Exports of Wood & Wood Products - 2006						
Tariff Head	Description	Import		Export		Units of Quantity
		Quantity	Value	Quantity	Value	
4401	Fuelwood, wood in chips, particles, etc.	-	3 067	-	1 883 735	Tons
4402	Charcoal	-	10 561	-	77 476	Tons
4403	Wood in the rough	-	32 960	-	125 396	1000 m3
4404	Hoopwood, split poles, stakes and sticks	-	845	-	18 522	Tons
4405	Wood wool & flour	-	2 212	-	9	Tons
4406	Railway sleepers	-	8 146	-	30	1000 m3
4407	Wood sawn or chipped lengthwise	-	898 376	-	96 944	1000 m3
4408	Veneer sheets & plywood	-	159 716	-	101 849	Tons
4409	Wood continuously shaped	-	108 199	-	9 819	Tons
4410	Particle board	-	99 248	-	26 746	Tons
4411	Fibreboard	-	278 908	-	102 305	Tons
4412	Plywood and veneered panels	-	167 957	-	12 340	Tons
4412	Plywood and veneered panels	-	59 587	-	7 402	1000 m3
4413	Densified wood	-	4 989	-	1 448	Tons
4414	Wooden picture frames	-	12 298	-	10 735	Tons
4415	Crates, pallets & cable drums	-	6 134	-	19 808	1000 units
4416	Barrels & casts	-	140 113	-	1 114	Tons
4417	Builders' joinery and carpentry (e.g. doors)	-	5 776	-	2 329	Tons
4418	Tool handles	-	174 594	-	292 458	Tons
4419	Table & kitchen ware	-	14 789	-	3 564	Tons
4420	Wood marquetry & inlaid wood	-	21 204	-	16 004	Tons
4421	Other articles of wood	-	94 357	-	24 008	Tons
	TOTAL		2 304 035		2 834 042	

Table 27. Wood and wood products trade – 2007

Imports and Exports of Wood & Wood Products - 2007						
Tariff Head	Description	Import		Export		Units of Quantity
		Quantity	Value	Quantity	Value	
4401	Fuelwood, wood in chips, particles, etc.	-	5 330	-	1 813 088	Tons
4402	Charcoal	-	12 676	-	99 514	Tons
4403	Wood in the rough	-	58 006	-	122 283	1000 m3
4404	Hoopwood, split poles, stakes and sticks	-	661	-	11 329	Tons
4405	Wood wool & flour	-	2 159	-	2	Tons
4406	Railway sleepers	-	5 366	-	128	1000 m3
4407	Wood sawn or chipped lengthwise	-	1 069 046	-	107 240	1000 m3
4408	Veneer sheets & plywood	-	171 294	-	125 322	Tons
4409	Wood continuously shaped	-	159 730	-	17 911	Tons
4410	Particle board	-	130 468	-	26 834	Tons
4411	Fibreboard	-	342 207	-	62 588	Tons
4412	Plywood and veneered panels	-	212 774	-	15 762	Tons
4412	Plywood and veneered panels	-	79 672	-	2 273	1000 m3
4413	Densified wood	-	1 997	-	2 490	Tons
4414	Wooden picture frames	-	15 406	-	3 195	Tons
4415	Crates, pallets & cable drums	-	8 824	-	25 256	1000 units
4416	Barrels & casts	-	169 418	-	856	Tons
4417	Builders' joinery and carpentry (e.g. doors)	-	7 056	-	2 671	Tons
4418	Tool handles	-	242 506	-	230 086	Tons
4419	Table & kitchen ware	-	13 284	-	3 812	Tons
4420	Wood marquetry & inlaid wood	-	24 891	-	20 742	Tons
4421	Other articles of wood	-	102 730	-	30 795	Tons
	TOTAL		2 835 500		2 724 176	

Table 28. Wood and wood products trade – January to March 2007

Imports and Exports of Wood & Wood Products - 2007 Jan-Mar						
Tariff Head	Description	Import		Export		Units of Quantity
		Quantity	Value	Quantity	Value	
4401	Fuelwood, wood in chips, particles, etc.	170	1 883	1 160 861	404 711	Tons
4402	Charcoal	3 236	3 232	7 714	28 859	Tons
4403	Wood in the rough	152	9 474	258	28 250	1000 m3
4404	Hoopwood, split poles, stakes and sticks	33	259	726	2 897	Tons
4405	Wood wool & flour	173	519			Tons
4406	Railway sleepers	28	1 796		21	1000 m3
4407	Wood sawn or chipped lengthwise	9 393	283 200	763	17 499	1000 m3
4408	Veneer sheets & plywood	1 590	42 047	1 028	29 009	Tons
4409	Wood continuously shaped	3 788	35 516	406	2 393	Tons
4410	Particle board	6 650	16 520	1 483	6 304	Tons
4411	Fibreboard	19 297	63 467	3 173	11 959	Tons
4412	Plywood and veneered panels	8 025	44 537	469	3 615	Tons
4412	Plywood and veneered panels	33 703	11 949	30	363	1000 m3
4413	Densified wood	122	847	125	616	Tons
4414	Wooden picture frames	167	2 558	9	701	Tons
4415	Crates, pallets & cable drums	50	1 387	317	3 891	1000 units
4416	Barrels & casts	1 740	127 248	20	404	Tons
4417	Builders' joinery and carpentry (e.g. doors)	167	1 666	22	586	Tons
4418	Tool handles	3 792	40 139	4 462	63 882	Tons
4419	Table & kitchen ware	107	2 459	27	443	Tons
4420	Wood marquetry & inlaid wood	421	5 332	91	3 456	Tons
4421	Other articles of wood	1 601	21 296	418	7 073	Tons
	TOTAL		717 329		616 934	

Table 29. Wood and wood products trade – April to June 2007

Imports and Exports of Wood & Wood Products - 2007 Apr-Jun						
Tariff Head	Description	Import		Export		Units of Quantity
		Quantity	Value	Quantity	Value	
4401	Fuelwood, wood in chips, particles, etc.	98	774	1 064 944	535 647	Tons
4402	Charcoal	3 040	3 186	10 562	41 873	Tons
4403	Wood in the rough	86	13 116	308	33 026	1000 m3
4404	Hoopwood, split poles, stakes and sticks	57	113	1 282	2 938	Tons
4405	Wood wool & flour	257	692			Tons
4406	Railway sleepers	27	579		16	1000 m3
4407	Wood sawn or chipped lengthwise	798	237 314	1 114	43 501	1000 m3
4408	Veneer sheets & plywood	1 493	39 756	905	24 521	Tons
4409	Wood continuously shaped	4 099	38 701	330	1 919	Tons
4410	Particle board	6 338	17 979	1 582	7 750	Tons
4411	Fibreboard	26 917	87 002	4 657	17 890	Tons
4412	Plywood and veneered panels	8 549	47 483	501	4 209	Tons
4412	Plywood and veneered panels	340	13 789	22	428	1000 m3
4413	Densified wood	19	268	193	888	Tons
4414	Wooden picture frames	146	2 549	13	780	Tons
4415	Crates, pallets & cable drums	27	1 657	87	4 757	1000 units
4416	Barrels & casts	525	26 004	69	229	Tons
4417	Builders' joinery and carpentry (e.g. doors)	4 434	930	8	339	Tons
4418	Tool handles	5 529	57 814	4 248	64 136	Tons
4419	Table & kitchen ware	171	2 960	58	1 138	Tons
4420	Wood marquetry & inlaid wood	387	5 760	92	3 806	Tons
4421	Other articles of wood	1 538	20 354	513	7 296	Tons
	TOTAL		618 779		797 088	

Table 30. Wood and wood products trade – July to September 2007

Imports and Exports of Wood & Wood Products - 2007 Jul-Sep						
Tariff Head	Description	Import		Export		Units of Quantity
		Quantity	Value	Quantity	Value	
4401	Fuelwood, wood in chips, particles, etc.	-	1 152	-	498 870	Tons
4402	Charcoal	-	3 275	-	13 072	Tons
4403	Wood in the rough	-	12 562	-	27 866	1000 m3
4404	Hoopwood, split poles, stakes and sticks	-	47	-	2 801	Tons
4405	Wood wool & flour	-	524	-	2	Tons
4406	Railway sleepers	-	2 042	-	62	1000 m3
4407	Wood sawn or chipped lengthwise	-	275 464	-	23 927	1000 m3
4408	Veneer sheets & plywood	-	47 503	-	37 610	Tons
4409	Wood continuously shaped	-	33 470	-	4 972	Tons
4410	Particle board	-	33 858	-	8 309	Tons
4411	Fibreboard	-	98 446	-	17 190	Tons
4412	Plywood and veneered panels	-	56 323	-	3 748	Tons
4412	Plywood and veneered panels	-	30 688	-	344	1000 m3
4413	Densified wood	-	410	-	705	Tons
4414	Wooden picture frames	-	5 698	-	818	Tons
4415	Crates, pallets & cable drums	-	3 667	-	9 123	1000 units
4416	Barrels & casts	-	8 036	-	104	Tons
4417	Builders' joinery and carpentry (e.g. doors)	-	2 503	-	780	Tons
4418	Tool handles	-	66 516	-	49 724	Tons
4419	Table & kitchen ware	-	4 049	-	1 219	Tons
4420	Wood marquetry & inlaid wood	-	7 160	-	7 206	Tons
4421	Other articles of wood	-	27 624	-	8 317	Tons
	TOTAL		721 018		716 768	

Table 31. Wood and wood products trade – October to December 2007

Imports and Exports of Wood & Wood Products - 2007 Oct-Dec						
Tariff Head	Description	Import		Export		Units of Quantity
		Quantity	Value	Quantity	Value	
4401	Fuelwood, wood in chips, particles, etc.	-	1 521	-	373 861	Tons
4402	Charcoal	-	2 983	-	15 710	Tons
4403	Wood in the rough	-	22 854	-	33 140	1000 m3
4404	Hoopwood, split poles, stakes and sticks	-	242	-	2 693	Tons
4405	Wood wool & flour	-	424	-		Tons
4406	Railway sleepers	-	949	-	29	1000 m3
4407	Wood sawn or chipped lengthwise	-	273 068	-	22 312	1000 m3
4408	Veneer sheets & plywood	-	41 987	-	34 182	Tons
4409	Wood continuously shaped	-	52 043	-	8 627	Tons
4410	Particle board	-	62 111	-	4 471	Tons
4411	Fibreboard	-	93 292	-	15 548	Tons
4412	Plywood and veneered panels	-	64 430	-	4 190	Tons
4412	Plywood and veneered panels	-	23 246	-	1 137	1000 m3
4413	Densified wood	-	472	-	282	Tons
4414	Wooden picture frames	-	4 602	-	895	Tons
4415	Crates, pallets & cable drums	-	2 113	-	7 486	1000 units
4416	Barrels & casts	-	8 131	-	119	Tons
4417	Builders' joinery and carpentry (e.g. doors)	-	1 957	-	966	Tons
4418	Tool handles	-	78 038	-	52 344	Tons
4419	Table & kitchen ware	-	3 816	-	1 012	Tons
4420	Wood marquetry & inlaid wood	-	6 640	-	6 274	Tons
4421	Other articles of wood	-	33 455	-	8 108	Tons
	TOTAL		778 374		593 386	

Table 32. Pulp trade – 2001

Imports and Exports of Pulp - 2001						
Tariff Head	Description	Import		Export		Units of Quantity
		Quantity	Value	Quantity	Value	
4701	Mechanical wood pulp	187	5 389	200	48	Tons
4702	Chemical wood pulp - dissolving grades	80	503	397 480	1 913 715	Tons
4703	Chemical wood pulp, soda or sulphate	43 460	177 062	161 569	655 472	Tons
4704	Chemical wood pulp, sulphite (not dissolving grades)	1 678	10 150	7 371	23 966	Tons
4705	Semi-chemical wood pulp	4 177	20 336		10	Tons
4706	Other pulps	163	642	2 139	1 232	Tons
4707	Waste of paper & paperboard	3 161	2 062	14 750	20 394	Tons
	TOTAL	52 904	216 143	583 509	2 614 837	

Table 33. Pulp trade – 2002

Imports and Exports of Pulp - 2002						
Tariff Head	Description	Import		Export		Units of Quantity
		Quantity	Value	Quantity	Value	
4701	Mechanical wood pulp	60	2 022	3	44	Tons
4702	Chemical wood pulp - dissolving grades	268	5 849	415 748	2 064 349	Tons
4703	Chemical wood pulp, soda or sulphate	43 189	191 357	194 805	770 690	Tons
4704	Chemical wood pulp, sulphite (not dissolving grades)	12 763	59 764	8 507	33 224	Tons
4705	Semi-chemical wood pulp	5 082	28 279		9	Tons
4706	Other pulps	69	600	1 869	5 584	Tons
4707	Waste of paper & paperboard	2 602	3 155	12 787	20 462	Tons
	TOTAL	64 033	291 026	633 719	2 894 361	

Table 34. Pulp trade – 2003

Imports and Exports of Pulp - 2003						
Tariff Head	Description	Import		Export		Units of Quantity
		Quantity	Value	Quantity	Value	
4701	Mechanical wood pulp			11	61	Tons
4702	Chemical wood pulp - dissolving grades	270	7 597	543 651	2 175 463	Tons
4703	Chemical wood pulp, soda or sulphate	37 538	134 915	245 909	585 402	Tons
4704	Chemical wood pulp, sulphite (not dissolving grades)	16 690	58 888	143	490	Tons
4705	Semi-chemical wood pulp	4 541	18 809			Tons
4706	Other pulps	422	2 732	2 823	4 746	Tons
4707	Waste of paper & paperboard	11 721	12 248	20 409	27 787	Tons
	TOTAL	71 181	235 189	812 946	2 793 949	

Table 35. Pulp trade – 2004

Imports and Exports of Pulp - 2004						
Tariff Head	Description	Import		Export		Units of Quantity
		Quantity	Value	Quantity	Value	
4701	Mechanical wood pulp	1	12		10	Tons
4702	Chemical wood pulp - dissolving grades	344	4 926	459 523	2 004 554	Tons
4703	Chemical wood pulp, soda or sulphate	45 588	154 647	179 442	449 577	Tons
4704	Chemical wood pulp, sulphite (not dissolving grades)	19 144	60 026	236	903	Tons
4705	Semi-chemical wood pulp	2 716	10 466		5	Tons
4706	Other pulps	724	6 421	7 459	8 163	Tons
4707	Waste of paper & paperboard	2 711	1 882	18 577	16 310	Tons
	TOTAL	71 230	238 381	665 237	2 479 523	

Table 36. Pulp trade – 2005

Imports and Exports of Pulp - 2005						
Tariff Head	Description	Import		Export		Units of Quantity
		Quantity	Value	Quantity	Value	
4701	Mechanical wood pulp	1	3		29	Tons
4702	Chemical wood pulp - dissolving grades	400	3 477	556 885	2 224 246	Tons
4703	Chemical wood pulp, soda or sulphate	57 359	186 116	183 245	320 494	Tons
4704	Chemical wood pulp, sulphite (not dissolving grades)	6 299	23 914	52	437	Tons
4705	Semi-chemical wood pulp	3 868	17 314	36	113	Tons
4706	Other pulps	1 095	11 254	18 129	18 536	Tons
4707	Waste of paper & paperboard	587	853	48 473	35 673	Tons
	TOTAL	69 608	242 931	806 820	2 599 527	

Table 37. Pulp trade – 2006

Imports and Exports of Pulp - 2006						
Tariff Head	Description	Import		Export		Units of Quantity
		Quantity	Value	Quantity	Value	
4701	Mechanical wood pulp	40	378		64	Tons
4702	Chemical wood pulp - dissolving grades	424	3 862	565 000	2 541 832	Tons
4703	Chemical wood pulp, soda or sulphate	41 573	137 704	134 612	457 891	Tons
4704	Chemical wood pulp, sulphite (not dissolving grades)	60 841	245 006	1 689	6 674	Tons
4705	Semi-chemical wood pulp	4 901	21 681	23	50	Tons
4706	Other pulps	1 173	10 925	20 720	24 355	Tons
4707	Waste of paper & paperboard	17 796	25 258	39 221	22 342	Tons
	TOTAL	126 747	444 815	761 265	3 053 208	

Table 38. Pulp trade – 2007

Imports and Exports of Pulp - 2007						
Tariff Head	Description	Import		Export		Units of Quantity
		Quantity	Value	Quantity	Value	
4701	Mechanical wood pulp	46	431			Tons
4702	Chemical wood pulp - dissolving grades	454	4 817	562 211	2 897 563	Tons
4703	Chemical wood pulp, soda or sulphate	20 880	101 434	276 310	671 141	Tons
4704	Chemical wood pulp, sulphite (not dissolving grades)	51 167	261 515	1 738	7 389	Tons
4705	Semi-chemical wood pulp	4 345	26 800	9	53	Tons
4706	Other pulps	1 430	16 225	14 452	18 458	Tons
4707	Waste of paper & paperboard	3 262	4 395	35 044	22 378	Tons
	TOTAL	81 584	415 616	889 764	3 616 981	

Table 39. Pulp trade – January to March 2007

Imports and Exports of Pulp - 2007 Jan-Mar						
Tariff Head	Description	Import		Export		Units of Quantity
		Quantity	Value	Quantity	Value	
4701	Mechanical wood pulp	28	270			Tons
4702	Chemical wood pulp - dissolving grades	70	723	126 450	622 916	Tons
4703	Chemical wood pulp, soda or sulphate	4 323	19 743	51 048	200 269	Tons
4704	Chemical wood pulp, sulphite (not dissolving grades)	10 146	49 987	745	3 294	Tons
4705	Semi-chemical wood pulp	1 291	6 775			Tons
4706	Other pulps	368	4 220	3 404	3 680	Tons
4707	Waste of paper & paperboard	880	1 189	10 172	5 371	Tons
	TOTAL	17 106	82 907	191 820	835 531	

Table 40. Pulp trade – April to June 2007

Imports and Exports of Pulp - 2006 Apr-Jun						
Tariff Head	Description	Import		Export		Units of Quantity
		Quantity	Value	Quantity	Value	
4701	Mechanical wood pulp	6	64			Tons
4702	Chemical wood pulp - dissolving grades	82	858	136 252	687 690	Tons
4703	Chemical wood pulp, soda or sulphate	3 303	16 115	120 769	181 283	Tons
4704	Chemical wood pulp, sulphite (not dissolving grades)	10 441	51 682	763	3 156	Tons
4705	Semi-chemical wood pulp	827	5 487	5	24	Tons
4706	Other pulps	193	2 167	2 223	2 349	Tons
4707	Waste of paper & paperboard	1 089	1 489	6 839	3 913	Tons
	TOTAL	15 941	77 862	266 851	878 416	

Table 41. Pulp trade – July to September 2007

Imports and Exports of Pulp - 2007 Jul-Sep						
Tariff Head	Description	Import		Export		Units of Quantity
		Quantity	Value	Quantity	Value	
4701	Mechanical wood pulp		1			Tons
4702	Chemical wood pulp - dissolving grades	163	1 730	152 441	812 153	Tons
4703	Chemical wood pulp, soda or sulphate	8 503	42 472	32 297	129 145	Tons
4704	Chemical wood pulp, sulphite (not dissolving grades)	15 228	78 484	204	837	Tons
4705	Semi-chemical wood pulp	914	7 634			Tons
4706	Other pulps	456	4 795	4 042	4 331	Tons
4707	Waste of paper & paperboard	505	740	8 237	5 839	Tons
	TOTAL	25 770	135 857	197 222	952 305	

Table 42. Pulp trade – October to December 2007

Imports and Exports of Pulp - 2007 Oct-Dec						
Tariff Head	Description	Import		Export		Units of Quantity
		Quantity	Value	Quantity	Value	
4701	Mechanical wood pulp	11	96			Tons
4702	Chemical wood pulp - dissolving grades	139	1 506	147 068	774 803	Tons
4703	Chemical wood pulp, soda or sulphate	4 750	23 104	72 195	160 443	Tons
4704	Chemical wood pulp, sulphite (not dissolving grades)	15 352	81 362	26	103	Tons
4705	Semi-chemical wood pulp	1 313	6 905	4	29	Tons
4706	Other pulps	413	5 042	4 783	8 098	Tons
4707	Waste of paper & paperboard	789	976	9 796	7 255	Tons
	TOTAL	22 768	118 991	233 870	950 730	

Table 43. Paper and paper products trade – 2001

Imports and Exports of Paper & Paper Products - 2001						
Tariff Head	Description	Import		Export		Units of Quantity
		Quantity	Value	Quantity	Value	
4801	Newsprint	589	2 450	104 954	434 432	Tons
4802	Uncoated paper & paperboard	9 464	183 332	129 831	654 683	Tons
4803	Tissue paper	3 806	16 344	12 060	78 382	Tons
4804	Uncoated kraft & paperboard	20 339	128 056	227 562	693 032	Tons
4805	Other uncoated paper & paperboard	20 382	115 474	307 096	1 068 574	Tons
4806	Greaseproof / tracing papers	6 732	73 935	782	4 080	Tons
4807	Composite paper	4 181	30 075	293	2 121	Tons
4808	Corrugated paper & paperboard	1 770	21 870	1 670	12 362	Tons
4809	Carbon paper	4 599	42 264	1 563	11 441	Tons
4810	Paper & paperboard coated with kaolin	131 834	898 815	9 476	68 170	Tons
4811	Printed / impregnated paper & paperboard	42 986	569 261	4 743	60 129	Tons
4812	Filter blocks & plates of paper pulp	247	7 139	86	1 237	Tons
4813	Cigarette paper	3 246	72 910	159	4 303	Tons
4814	Wallpaper	354	15 310	106	2 513	Tons
4815	Floor coverings on a base of paper or paperboard	1	45	84	300	Tons
4816	Carbon & self-copy paper	3 545	49 256	150	2 098	Tons
4817	Envelopes and correspondence cards	105	3 273	792	17 476	Tons
4818	Sanitary type paper products	13 039	225 175	5 304	40 331	Tons
4819	Packing containers of paper & paperboard	2 401	42 984	34 745	258 440	Tons
4820	Exercise & similar books and pads	2 387	58 960	9 002	87 592	Tons
4821	Labels of paper & paperboard	377	30 235	2 766	57 964	Tons
4822	Bobbins & spools	55	944	5 073	9 139	Tons
4823	Other paper & paperboard products	4 407	128 108	61 689	388 648	Tons
	TOTAL	276 846	2 716 215	919 983	3 957 447	

Table 44. Paper and paper products trade – 2002

Imports and Exports of Paper & Paper Products - 2002						
Tariff Head	Description	Import		Export		Units of Quantity
		Quantity	Value	Quantity	Value	
4801	Newsprint	558	3 094	127 782	527 975	Tons
4802	Uncoated paper & paperboard	15 758	277 338	89 078	596 549	Tons
4803	Tissue paper	1 016	8 991	11 850	91 957	Tons
4804	Uncoated kraft & paperboard	21 259	167 837	202 712	808 570	Tons
4805	Other uncoated paper & paperboard	18 798	145 562	171 995	855 583	Tons
4806	Greaseproof / tracing papers	12 597	122 053	457	3 406	Tons
4807	Composite paper	4 194	44 155	205	2 270	Tons
4808	Corrugated paper & paperboard	1 535	25 132	3 782	21 746	Tons
4809	Carbon paper	2 800	32 807	1 741	23 829	Tons
4810	Paper & paperboard coated with kaolin	137 465	1 143 904	32 929	230 455	Tons
4811	Printed / impregnated paper & paperboard	43 971	948 717	2 965	59 354	Tons
4812	Filter blocks & plates of paper pulp	236	9 408	8	465	Tons
4813	Cigarette paper	3 115	93 101	288	9 379	Tons
4814	Wallpaper	298	15 401	75	2 187	Tons
4815	Floor coverings on a base of paper or paperboard	1	58	71	192	Tons
4816	Carbon & self-copy paper	1 737	46 549	326	2 858	Tons
4817	Envelopes and correspondence cards	111	4 566	825	20 142	Tons
4818	Sanitary type paper products	13 528	303 931	3 548	66 690	Tons
4819	Packing containers of paper & paperboard	2 265	52 177	40 457	349 718	Tons
4820	Exercise & similar books and pads	1 940	57 755	13 322	116 002	Tons
4821	Labels of paper & paperboard	513	44 120	2 537	103 445	Tons
4822	Bobbins & spools	55	1 038	1 139	7 757	Tons
4823	Other paper & paperboard products	3 320	134 641	45 748	353 713	Tons
	TOTAL	287 070	3 682 337	753 838	4 254 243	

Table 45. Paper and paper products trade – 2003

Imports and Exports of Paper & Paper Products - 2003						
Tariff Head	Description	Import		Export		Units of Quantity
		Quantity	Value	Quantity	Value	
4801	Newsprint	822	3 199	108 683	373 405	Tons
4802	Uncoated paper & paperboard	40 016	285 416	126 343	658 060	Tons
4803	Tissue paper	1 954	12 367	14 971	89 848	Tons
4804	Uncoated kraft & paperboard	45 249	233 565	387 995	1 258 411	Tons
4805	Other uncoated paper & paperboard	23 808	124 987	53 778	170 441	Tons
4806	Greaseproof / tracing papers	9 487	101 090	28	708	Tons
4807	Composite paper	4 876	35 341	339	1 754	Tons
4808	Corrugated paper & paperboard	2 215	30 451	6 062	30 538	Tons
4809	Carbon paper	6 517	62 028	502	6 354	Tons
4810	Paper & paperboard coated with kaolin	186 107	1 143 418	50 904	226 628	Tons
4811	Printed / impregnated paper & paperboard	44 148	643 301	5 613	64 506	Tons
4812	Filter blocks & plates of paper pulp	219	7 250	13	779	Tons
4813	Cigarette paper	3 313	81 758	301	11 015	Tons
4814	Wallpaper	252	9 768	29	1 557	Tons
4815	Floor coverings on a base of paper or paperboard	1	45	30	212	Tons
4816	Carbon & self-copy paper	2 128	40 797	137	2 593	Tons
4817	Envelopes and correspondence cards	114	4 251	741	16 744	Tons
4818	Sanitary type paper products	18 541	335 614	2 254	41 086	Tons
4819	Packing containers of paper & paperboard	3 062	53 533	49 683	337 086	Tons
4820	Exercise & similar books and pads	3 197	56 227	10 490	99 914	Tons
4821	Labels of paper & paperboard	542	43 397	2 491	86 690	Tons
4822	Bobbins & spools	114	1 594	345	2 766	Tons
4823	Other paper & paperboard products	6 032	124 328	50 913	311 344	Tons
	TOTAL	402 715	3 433 726	872 644	3 792 436	

Table 46. Paper and paper products trade – 2004

Imports and Exports of Paper & Paper Products - 2004						
Tariff Head	Description	Import		Export		Units of Quantity
		Quantity	Value	Quantity	Value	
4801	Newsprint	5 709	20 342	75 891	254 105	Tons
4802	Uncoated paper & paperboard	43 252	357 942	231 149	1 140 151	Tons
4803	Tissue paper	4 637	20 749	13 762	73 795	Tons
4804	Uncoated kraft & paperboard	62 199	260 092	396 761	1 042 088	Tons
4805	Other uncoated paper & paperboard	17 066	86 515	27 101	64 247	Tons
4806	Greaseproof / tracing papers	10 153	95 941	32	600	Tons
4807	Composite paper	6 749	49 658	82	1 323	Tons
4808	Corrugated paper & paperboard	3 041	29 304	4 956	23 710	Tons
4809	Carbon paper	4 595	41 156	594	7 206	Tons
4810	Paper & paperboard coated with kaolin	189 134	1 051 539	24 488	92 756	Tons
4811	Printed / impregnated paper & paperboard	47 606	601 077	4 235	75 821	Tons
4812	Filter blocks & plates of paper pulp	276	8 736	9	202	Tons
4813	Cigarette paper	3 162	74 736	171	5 583	Tons
4814	Wallpaper	254	10 720	45	1 093	Tons
4815	Floor coverings on a base of paper or paperboard	1	53	4	35	Tons
4816	Carbon & self-copy paper	1 602	33 271	141	2 394	Tons
4817	Envelopes and correspondence cards	270	2 803	918	19 300	Tons
4818	Sanitary type paper products	21 309	359 060	2 316	39 889	Tons
4819	Packing containers of paper & paperboard	4 098	59 326	34 132	268 193	Tons
4820	Exercise & similar books and pads	4 042	56 404	6 800	81 627	Tons
4821	Labels of paper & paperboard	541	37 511	3 866	81 622	Tons
4822	Bobbins & spools	101	1 371	267	4 422	Tons
4823	Other paper & paperboard products	8 844	140 930	3 058	63 276	Tons
	TOTAL	438 639	3 399 235	830 777	3 343 437	

Table 47. Paper and paper products trade – 2005

Imports and Exports of Paper & Paper Products - 2005						
Tariff Head	Description	Import		Export		Units of Quantity
		Quantity	Value	Quantity	Value	
4801	Newsprint	675	2 278	61 439	214 266	Tons
4802	Uncoated paper & paperboard	54 228	381 265	247 016	987 861	Tons
4803	Tissue paper	3 055	26 207	11 894	62 131	Tons
4804	Uncoated kraft & paperboard	59 293	269 735	370 478	992 424	Tons
4805	Other uncoated paper & paperboard	16 137	84 110	13 214	39 164	Tons
4806	Greaseproof / tracing papers	11 479	108 882	99	882	Tons
4807	Composite paper	6 630	45 479	160	968	Tons
4808	Corrugated paper & paperboard	2 813	33 230	3 433	67 488	Tons
4809	Carbon paper	5 516	48 056	241	3 445	Tons
4810	Paper & paperboard coated with kaolin	222 159	1 266 348	36 854	148 196	Tons
4811	Printed / impregnated paper & paperboard	61 951	749 624	6 950	96 535	Tons
4812	Filter blocks & plates of paper pulp	226	6 849	53	1 720	Tons
4813	Cigarette paper	3 303	75 070	294	4 201	Tons
4814	Wallpaper	441	16 502	17	813	Tons
4815	Floor coverings on a base of paper or paperboard		1	1	17	Tons
4816	Carbon & self-copy paper	1 520	32 573	54	2 611	Tons
4817	Envelopes and correspondence cards	129	3 985	823	16 489	Tons
4818	Sanitary type paper products	22 049	375 599	4 363	46 277	Tons
4819	Packing containers of paper & paperboard	6 198	86 445	40 026	285 471	Tons
4820	Exercise & similar books and pads	4 606	73 884	10 305	56 794	Tons
4821	Labels of paper & paperboard	576	37 091	6 135	82 400	Tons
4822	Bobbins & spools	63	672	221	2 192	Tons
4823	Other paper & paperboard products	9 928	146 791	5 110	80 801	Tons
	TOTAL	492 975	3 870 678	819 181	3 193 145	

Table 48. Paper and paper products trade – 2006

Imports and Exports of Paper & Paper Products - 2006						
Tariff Head	Description	Import		Export		Units of Quantity
		Quantity	Value	Quantity	Value	
4801	Newsprint	22 399	93 534	19 083	78 963	Tons
4802	Uncoated paper & paperboard	94 911	632 668	305 882	1 366 572	Tons
4803	Tissue paper	4 510	30 790	6 920	26 186	Tons
4804	Uncoated kraft & paperboard	74 562	344 003	365 038	1 279 560	Tons
4805	Other uncoated paper & paperboard	22 881	107 720	13 759	44 969	Tons
4806	Greaseproof / tracing papers	12 426	126 907	200	10 750	Tons
4807	Composite paper	6 979	58 410	89	725	Tons
4808	Corrugated paper & paperboard	2 221	39 967	3 852	83 905	Tons
4809	Carbon paper	5 912	58 958	181	2 293	Tons
4810	Paper & paperboard coated with kaolin	263 246	1 603 661	8 464	59 656	Tons
4811	Printed / impregnated paper & paperboard	70 898	875 913	7 331	107 088	Tons
4812	Filter blocks & plates of paper pulp	212	6 548	8	666	Tons
4813	Cigarette paper	3 327	78 735	348	7 243	Tons
4814	Wallpaper	483	19 650	24	1 570	Tons
4815	Floor coverings on a base of paper or paperboard		13		1	Tons
4816	Carbon & self-copy paper	2 917	43 045	80	3 041	Tons
4817	Envelopes and correspondence cards	594	5 296	1 123	20 491	Tons
4818	Sanitary type paper products	38 626	706 285	4 185	59 346	Tons
4819	Packing containers of paper & paperboard	5 714	95 541	40 651	333 028	Tons
4820	Exercise & similar books and pads	5 126	91 201	7 493	70 138	Tons
4821	Labels of paper & paperboard	693	50 512	2 271	75 536	Tons
4822	Bobbins & spools	99	1 917	129	1 103	Tons
4823	Other paper & paperboard products	8 677	168 399	3 708	41 661	Tons
	TOTAL	647 414	5 239 674	790 818	3 674 491	

Table 49. Paper and paper products trade – 2007

Imports and Exports of Paper & Paper Products - 2007						
Tariff Head	Description	Import		Export		Units of Quantity
		Quantity	Value	Quantity	Value	
4801	Newsprint	1 766	8 516	23 244	105 859	Tons
4802	Uncoated paper & paperboard	107 707	849 593	366 922	2 036 545	Tons
4803	Tissue paper	5 101	43 089	2 188	18 529	Tons
4804	Uncoated kraft & paperboard	81 732	438 641	316 266	1 324 874	Tons
4805	Other uncoated paper & paperboard	23 539	123 143	29 661	107 628	Tons
4806	Greaseproof / tracing papers	12 480	145 864	357	18 054	Tons
4807	Composite paper	5 240	47 131	64	1 858	Tons
4808	Corrugated paper & paperboard	3 057	54 174	4 084	24 571	Tons
4809	Carbon paper	15 409	156 417	136	2 930	Tons
4810	Paper & paperboard coated with kaolin	284 835	1 977 219	8 296	64 638	Tons
4811	Printed / impregnated paper & paperboard	62 031	989 622	8 653	130 517	Tons
4812	Filter blocks & plates of paper pulp	274	8 640	10	779	Tons
4813	Cigarette paper	4 159	107 437	919	14 702	Tons
4814	Wallpaper	433	22 880	30	3 195	Tons
4815	Floor coverings on a base of paper or paperboard					Tons
4816	Carbon & self-copy paper	6 994	80 364	71	1 760	Tons
4817	Envelopes and correspondence cards	260	7 359	1 562	21 037	Tons
4818	Sanitary type paper products	44 946	940 080	4 374	98 837	Tons
4819	Packing containers of paper & paperboard	8 948	135 980	37 720	334 535	Tons
4820	Exercise & similar books and pads	4 969	107 489	4 058	72 534	Tons
4821	Labels of paper & paperboard	2 234	53 382	1 405	58 638	Tons
4822	Bobbins & spools	116	1 432	286	2 365	Tons
4823	Other paper & paperboard products	8 269	201 939	6 032	44 396	Tons
	TOTAL	684 502	6 500 390	816 339	4 488 781	

Table 50. Paper and paper products trade – January to March 2007

Imports and Exports of Paper & Paper Products - 2007 Jan-Mar						
Tariff Head	Description	Import		Export		Units of Quantity
		Quantity	Value	Quantity	Value	
4801	Newsprint	885	4 059	2 535	12 539	Tons
4802	Uncoated paper & paperboard	23 948	233 875	95 025	496 073	Tons
4803	Tissue paper	1 098	9 437	781	6 913	Tons
4804	Uncoated kraft & paperboard	22 809	120 253	94 531	370 278	Tons
4805	Other uncoated paper & paperboard	6 555	32 943	6 384	24 303	Tons
4806	Greaseproof / tracing papers	3 225	37 240	56	4 783	Tons
4807	Composite paper	1 447	12 709	28	280	Tons
4808	Corrugated paper & paperboard	697	14 260	526	2 208	Tons
4809	Carbon paper	1 663	18 191	13	333	Tons
4810	Paper & paperboard coated with kaolin	71 854	494 135	1 937	12 393	Tons
4811	Printed / impregnated paper & paperboard	15 843	230 955	1 461	31 587	Tons
4812	Filter blocks & plates of paper pulp	56	1 903	7	510	Tons
4813	Cigarette paper	1 144	28 801	140	3 134	Tons
4814	Wallpaper	72	3 849	9	655	Tons
4815	Floor coverings on a base of paper or paperboard					Tons
4816	Carbon & self-copy paper	578	9 604	7	411	Tons
4817	Envelopes and correspondence cards	62	2 444	272	4 072	Tons
4818	Sanitary type paper products	13 266	266 291	490	15 024	Tons
4819	Packing containers of paper & paperboard	1 645	32 106	6 551	67 376	Tons
4820	Exercise & similar books and pads	898	18 092	840	17 397	Tons
4821	Labels of paper & paperboard	127	11 694	338	14 874	Tons
4822	Bobbins & spools	35	340	105	864	Tons
4823	Other paper & paperboard products	1 839	44 581	771	5 483	Tons
	TOTAL	169 746	1 627 764	212 806	1 091 490	

Table 51. Paper and paper products trade – April to June 2007

Imports and Exports of Paper & Paper Products - 2007 Apr-Jun						
Tariff Head	Description	Import		Export		Units of Quantity
		Quantity	Value	Quantity	Value	
4801	Newsprint	220	1 174	3 850	19 771	Tons
4802	Uncoated paper & paperboard	29 725	233 247	80 940	491 586	Tons
4803	Tissue paper	1 539	13 735	444	3 454	Tons
4804	Uncoated kraft & paperboard	22 736	117 592	83 204	327 845	Tons
4805	Other uncoated paper & paperboard	8 460	36 913	9 269	30 771	Tons
4806	Greaseproof / tracing papers	3 017	34 528	53	1 295	Tons
4807	Composite paper	1 085	9 875	34	1 506	Tons
4808	Corrugated paper & paperboard	1 103	16 064	572	2 056	Tons
4809	Carbon paper	3 778	38 852	36	507	Tons
4810	Paper & paperboard coated with kaolin	64 319	445 233	1 953	15 156	Tons
4811	Printed / impregnated paper & paperboard	15 239	245 464	1 924	31 234	Tons
4812	Filter blocks & plates of paper pulp	66	1 903	1	28	Tons
4813	Cigarette paper	909	23 119	405	6 446	Tons
4814	Wallpaper	135	6 200	5	466	Tons
4815	Floor coverings on a base of paper or paperboard					Tons
4816	Carbon & self-copy paper	2 501	29 339	15	571	Tons
4817	Envelopes and correspondence cards	47	1 383	395	5 109	Tons
4818	Sanitary type paper products	10 012	206 384	1 909	21 382	Tons
4819	Packing containers of paper & paperboard	1 513	27 275	8 450	76 701	Tons
4820	Exercise & similar books and pads	1 043	23 088	870	13 588	Tons
4821	Labels of paper & paperboard	1 734	14 065	340	13 909	Tons
4822	Bobbins & spools	38	383	79	645	Tons
4823	Other paper & paperboard products	2 129	46 415	1 145	11 185	Tons
	TOTAL	171 350	1 572 234	195 893	1 075 210	

Table 52. Paper and paper products trade – July to September 2007

Imports and Exports of Paper & Paper Products - 2007 Jul-Sep						
Tariff Head	Description	Import		Export		Units of Quantity
		Quantity	Value	Quantity	Value	
	Value in thousand Rand					
4801	Newsprint	294	1 507	10 623	46 719	Tons
4802	Uncoated paper & paperboard	27 636	188 585	82 202	480 490	Tons
4803	Tissue paper	1 513	12 859	606	5 052	Tons
4804	Uncoated kraft & paperboard	16 890	95 570	72 827	326 137	Tons
4805	Other uncoated paper & paperboard	5 214	28 925	5 280	21 753	Tons
4806	Greaseproof / tracing papers	3 220	38 053	135	6 287	Tons
4807	Composite paper	1 082	10 807	1	23	Tons
4808	Corrugated paper & paperboard	673	11 959	1 617	11 127	Tons
4809	Carbon paper	5 194	52 779	28	524	Tons
4810	Paper & paperboard coated with kaolin	74 946	506 279	1 890	15 192	Tons
4811	Printed / impregnated paper & paperboard	15 869	264 645	2 397	31 625	Tons
4812	Filter blocks & plates of paper pulp	70	2 088	1	89	Tons
4813	Cigarette paper	842	25 742	253	2 302	Tons
4814	Wallpaper	125	6 494	10	958	Tons
4815	Floor coverings on a base of paper or paperboard					Tons
4816	Carbon & self-copy paper	2 658	28 072	34	495	Tons
4817	Envelopes and correspondence cards	63	1 617	372	7 116	Tons
4818	Sanitary type paper products	10 042	218 371	907	26 327	Tons
4819	Packing containers of paper & paperboard	3 595	33 818	12 734	101 752	Tons
4820	Exercise & similar books and pads	1 484	32 932	1 420	23 393	Tons
4821	Labels of paper & paperboard	167	11 998	353	11 122	Tons
4822	Bobbins & spools	19	362	33	266	Tons
4823	Other paper & paperboard products	2 326	56 899	1 583	13 936	Tons
	TOTAL	173 922	1 630 360	195 306	1 132 685	

Table 53. Paper and paper products trade – October to December 2007

Imports and Exports of Paper & Paper Products - 2007 Oct-Dec						
Tariff Head	Description	Import		Export		Units of Quantity
		Quantity	Value	Quantity	Value	
4801	Newsprint	367	1 776	6 235	26 830	Tons
4802	Uncoated paper & paperboard	26 398	193 886	108 755	568 396	Tons
4803	Tissue paper	952	7 058	357	3 111	Tons
4804	Uncoated kraft & paperboard	19 297	105 225	65 706	300 615	Tons
4805	Other uncoated paper & paperboard	3 310	24 362	8 728	30 801	Tons
4806	Greaseproof / tracing papers	3 018	36 043	112	5 689	Tons
4807	Composite paper	1 626	13 740	1	48	Tons
4808	Corrugated paper & paperboard	583	11 890	1 370	9 179	Tons
4809	Carbon paper	4 774	46 595	60	1 566	Tons
4810	Paper & paperboard coated with kaolin	73 715	531 572	2 516	21 898	Tons
4811	Printed / impregnated paper & paperboard	15 080	248 558	2 871	36 071	Tons
4812	Filter blocks & plates of paper pulp	82	2 746	2	152	Tons
4813	Cigarette paper	1 264	29 775	121	2 820	Tons
4814	Wallpaper	101	6 336	7	1 116	Tons
4815	Floor coverings on a base of paper or paperboard					Tons
4816	Carbon & self-copy paper	1 257	13 348	15	283	Tons
4817	Envelopes and correspondence cards	88	1 914	523	4 740	Tons
4818	Sanitary type paper products	11 625	249 033	1 068	36 104	Tons
4819	Packing containers of paper & paperboard	2 195	42 781	9 984	88 707	Tons
4820	Exercise & similar books and pads	1 545	33 377	927	18 156	Tons
4821	Labels of paper & paperboard	206	15 625	374	18 733	Tons
4822	Bobbins & spools	25	346	70	591	Tons
4823	Other paper & paperboard products	1 975	54 045	2 532	13 793	Tons
	TOTAL	169 484	1 670 032	212 334	1 189 397	